



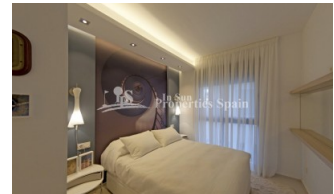
REF: # 5948

QUESADA-ROJALES (DONA PEPA)



#### INFO

PRIS:	188.000 €
BOLIG TYPE:	Leilighet
STED:	Quesada-Rojales (Dona Pepa)
SOVEROM:	3
Bad:	2
BOAREAL ( m2 ):	102
TOMT ( m2 ):	-
Terrasse ( m2 ):	35
ÅR:	
ETASJER:	-
MELDING	-

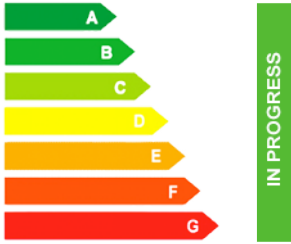


#### BESKRIVELSE

Gran Sol is a new KEY READY residential located in Doña Pepa, an elegant urbanisation with wide avenues, wonderful views to the Natural Park and the salt lakes with a wide range of leisure activities and all the necessary amenities. Available are these 3 bedrooms, 2 bathroom Ground Floor, Corner Apartments of 102m2 with 35m2 private garden with tiled area and artificial grass, storage room, access to four swimming pools, beautiful Green areas, Gym and a private gated parking inside the residential. Each block also has a lift that leads directly to the solarium. Its high-tech architecture with pure lines combines perfectly with its predominant colour (white) giving a sensation of harmony. Doña Pepa is a modern urbanisation belonging to Ciudad Quesada and has all the amenities which include supermarkets, bars, hotel and shops as well as a bank. Ciudad Quesada town centre is a ten minute walk from Doña Pepa. In Ciudad Quesada itself you will find international supermarkets, restaurants, banks, a medical centre as well as a water park. The property is ideally located if you are a golf enthusiast, with La Marquesqa Golf Club just a five minute drive away. The nearest beaches are at

Guardamar/Campomar and La Mata ten minutes drive away. Nearest Airports: San Javier (Murcia) - Approx 30 minute drive Alicante Airport - Approx 30 minute drive



STIL	UTSIKT	DISTANSE TIL :	ORIENTERING
<ul style="list-style-type: none"> <li>Modern</li> <li>Contemporary</li> </ul>	<ul style="list-style-type: none"> <li>Panorama</li> </ul>	Strand : 7 Km Flyplass: 30 Km Sentrum : 1 Km	South East West
PARKERING NR BILER	HOVED BOLIG	FLOARING	KJØKKEN
: 1	<ul style="list-style-type: none"> <li>Lagerrom</li> <li>Gym</li> </ul>	<ul style="list-style-type: none"> <li>Fliser</li> <li>Stein</li> </ul>	<ul style="list-style-type: none"> <li>Åpent kjøkken</li> <li>Hvitevarer</li> </ul>
HAGE TERASSER	EXTRA	ENERGETIC CERTIFIED	
<ul style="list-style-type: none"> <li>Ooverbygd terrasse</li> <li>Åpen terrasse</li> <li>Opparbeidet hage</li> <li>Stein murer</li> <li>Barbeque</li> <li>Privat hage</li> <li>Felles hage</li> </ul>	<ul style="list-style-type: none"> <li>Innebygde garderober</li> <li>Sikkerhets dør</li> <li>Vinduer med dobbelt glass</li> <li>Heis</li> </ul>	 <p>The image shows a vertical energy efficiency scale with seven horizontal bars labeled A through G. The bars are colored in a gradient from green at the top to red at the bottom. A vertical green bar on the right side of the scale is labeled 'IN PROGRESS'.</p>	

**"OUR EXPERIENCE IS YOUR GUARANTEE"**