



REF: # 6658

TORREVIEJA (TORREVIEJA)



INFO

PRIS: 499.000 €

BOLIG TYPE: Leilighet

STED: Torrevieja
(Torrevieja)

SOVEROM: 4

Bad: 2

BOAREAL (m2):
): 183

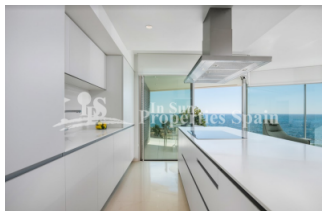
TOMT (m2): -

Terrasse (m2): 22

ÅR:

ETASJER: -

MELDING -



BESKRIVELSE

Key Ready, Edificio Lasal is located FIRST LINE BEACH on the new promenade of TORREVIEJA. A facade of more than 50m in length facing the Mediterranean Sea. This exclusive project consists of twenty homes, four per floor, 3 and 4 bedrooms, up to 197m2 build all with stunning panoramic views! There is a basement with 20 garage spaces and storage rooms and the ground floor is for commercial use. The minimalist design of the building, and the meticulously selected top quality materials, make this building a benchmark on the coast of the Costa Blanca. This is a 4 bed, 2 bath, 183m2 first floor Apartment with 2 terraces of 12,17 m2 +10,39m2. Torrevieja is located on the shores of the Mediterranean Sea, south of Alicante. Surrounded by two large lagoons of natural salt that make up the famous Salinas de Torrevieja. We are talking about a location with characteristics as attractive as its magnificent beaches with fine sand, squares, walks, parks, gardens and natural landscapes. Also 47 km from Alicante, the provincial capital and 50 km to the airport Murcia Corvera. To practice sports and enjoy the

sea, Torrevieja has one of the best yacht clubs in Spain and two private ports where they offer a wide range of jobs at sea 365 days a year. From diving courses, windsurfing, kayaking, excursions by the sea and much more. Warm and regular weather throughout the year, with 360 days of sunshine and 18°C on average.



STIL	UTSIKT	AIRCONDITION	DISTANSE TIL :
<ul style="list-style-type: none"> Modern Contemporary 	<ul style="list-style-type: none"> Panorama Sjø utsikt 	<ul style="list-style-type: none"> Sentral aircondition 	Strand : 50 m Flyplass: 40 Km Sentrum : 500 m
ORIENTERING	MØBLER	PARKERING NR BILER	HOVED BOLIG
South	<ul style="list-style-type: none"> Uten møbler 	: 1	<ul style="list-style-type: none"> Lagerrom Bad on suite
FLOORING	KJØKKEN	HAGE TERASSER	ENERGETIC CERTIFIED
<ul style="list-style-type: none"> Fliser Stein 	<ul style="list-style-type: none"> Åpent kjøkken Hvitevarer Granit benkeplate 	<ul style="list-style-type: none"> Ooverbygd terrasse 	<div> <div> <div>A</div> <div>B</div> <div>C</div> <div>D</div> <div>E</div> <div>F</div> <div>G</div> </div> <div> Bygde garderob Gullmets dør Lager rom </div> <div>IN PROGRESS</div> </div>

"OUR EXPERIENCE IS YOUR GUARANTEE"