



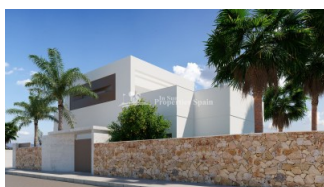
REF: # 11670

ROJALES (GOLF LA MARQUESA (CIUDAD QUESADA))



INFO

PRIS:	788.670 €
BOLIG TYPE:	Villa
STED:	Rojales (Golf La Marquesa (Ciudad Quesada))
SOVEROM:	3
Bad:	3
BOAREAL (m2):	160
TOMT (m2):	530
Terrasse (m2):	140
ÅR:	
ETASJER:	2
MELDING	-



BESKRIVELSE

KEY READY !! Villa Elios, a modern warm 160m² home designed with a distinct personality on a plot of 530m² consisting of 3 bedrooms, 3 bathrooms, open plan kitchen / lounge / dining area, 140m² terrace, private garden and 3.6 x 10m swimming pool. Adapted to modern lifestyle, Villa Elios is built-in high-quality materials, bright and in perfect architectural harmony. They feature open-plan living areas with a beautifully appointed kitchen with illumination features and wide glass sliding doors that connect directly with the private landscaped gardens and large swimming pool. Furthermore it will feature equipments such as floor heating throughout, high efficiency electrical appliances and top of the range materials hand-picked for this unique home. It's all in the details! The perfect space to enjoy the all year round mild Mediterranean climate. Set on the Quesada hilltops it overlooks the Lagoon surrounded by orange and lemon groves. On the other side you are spoiled with magnificent views of the 18-hole La Marquesa Golf course in the valley. It provides easy access to several sports facilities, a fitness centre, spa,

tennis and paddle courts, as well as biking and hiking trails. The Ideal place for sports and beach enthusiasts located only a few minutes' drive to the golf and country club and blue flag beaches in the area. These homes are built on a fantastic location for all year round living, being ideal for the family to enjoy the qualities of the Mediterranean life



STIL

- Modern
- Contemporary

AIRCONDITION

- Sentral aircondition

DISTANSE TIL :

Flyplass: 40 Km

Sentrum : 8 Km

PARKERING NR BILER

Garasje nr biler : 1

FLOORING

- Fliser
- Stein

KJØKKEN

- Åpent kjøkken
- Hvitevarer

HAGE TERASSER

- Ooverbygd terrasse
- Opparbeidet hage
- Stein murer
- Privat hage

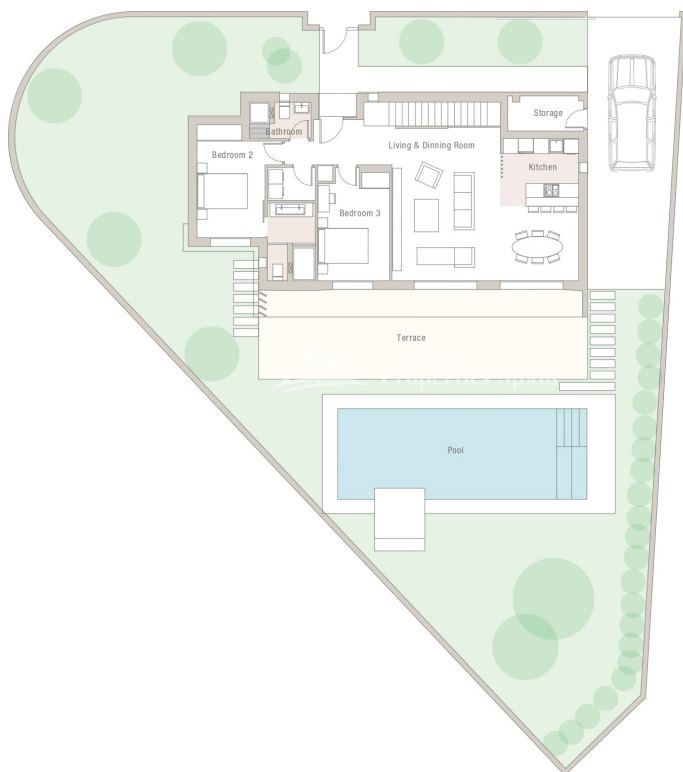
EXTRA

- Innebygde garderober
- Alarm
- Sikkerhets dør
- Vinduer med dobbelt glass

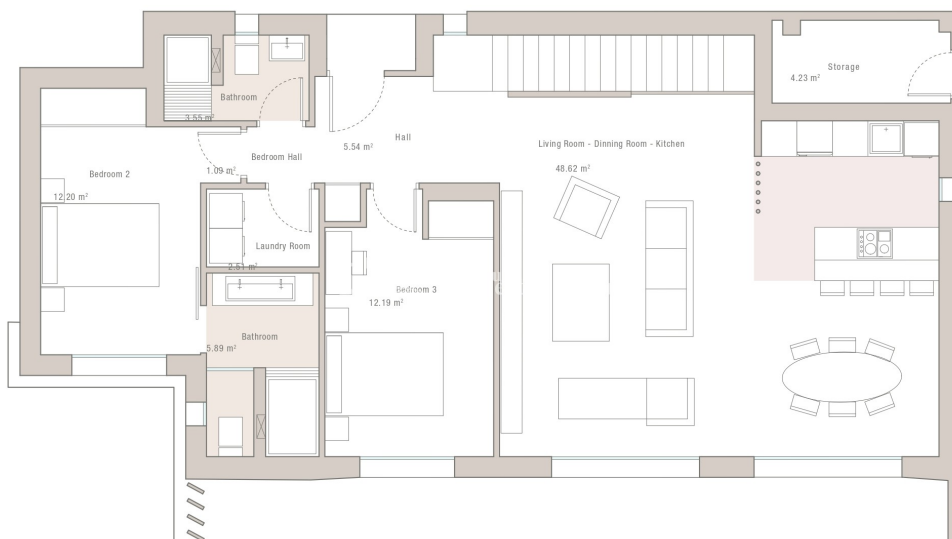


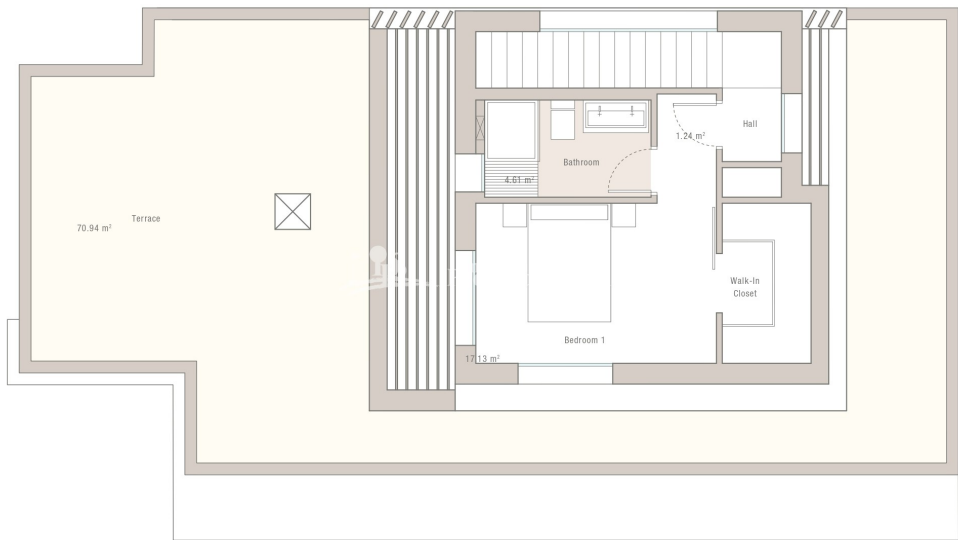






Dwelling 133.40 m²
Total Build Surface 157.60 m²









"OUR EXPERIENCE IS YOUR GUARANTEE"