



REF: # 6658

TORREVIEJA (TORREVIEJA)



#### INFO

**PRIS:** 499.000 €

**BOLIG TYPE:** Leilighet

**STED:** Torrevieja  
(Torrevieja)

**SOVEROM:** 4

**Bad:** 2

**BOAREAL ( m2 ):** 183

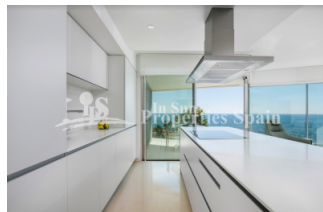
**TOMT ( m2 ):** -

**Terrasse ( m2 ):** 22

**ÅR:**

**ETASJER:** -

**MELDING** -



#### BESKRIVELSE

Key Ready, Edificio Lasal is located FIRST LINE BEACH on the new promenade of TORREVIEJA. A facade of more than 50m in length facing the Mediterranean Sea. This exclusive project consists of twenty homes, four per floor, 3 and 4 bedrooms, up to 197m2 build all with stunning panoramic views! There is a basement with 20 garage spaces and storage rooms and the ground floor is for commercial use. The minimalist design of the building, and the meticulously selected top quality materials, make this building a benchmark on the coast of the Costa Blanca. This is a 4 bed, 2 bath, 183m2 frist floor Apartment with 2 terraces of 12,17 m2 +10,39m2. Torrevieja is located on the shores of the Mediterranean Sea, south of Alicante. Surrounded by two large lagoons of natural salt that make up the famous Salinas de Torrevieja. We are talking about a location with characteristics as attractive as its magnificent beaches with fine sand, squares, walks, parks, gardens and natural landscapes. Also 47 km from Alicante, the provincial capital and 50 km to the airport Murcia Corvera. To practice sports and enjoy the sea, Torrevieja has one of the best yacht clubs in Spain and two private

ports where they offer a wide range of jobs at sea 365 days a year. From diving courses, windsurfing, kayaking, excursions by the sea and much more. Warm and regular weather throughout the year, with 360 days of sunshine and 18°C on average.



<b>STIL</b> <ul style="list-style-type: none"><li>• Modern</li><li>• Contemporary</li></ul>	<b>UTSIKT</b> <ul style="list-style-type: none"><li>• Panorama</li><li>• Sjø utsikt</li></ul>	<b>AIRCONDITION</b> <ul style="list-style-type: none"><li>• Sentral aircondition</li></ul>	<b>DISTANSE TIL :</b> <div>Strand : 50 m</div> <div>Flyplass: 40 Km</div> <div>Sentrum : 500 m</div>
<b>ORIENTERING</b> <div>South</div>	<b>MØBLER</b> <ul style="list-style-type: none"><li>• Uten møbler</li></ul>	<b>PARKERING NR BILER</b> <div>: 1</div>	<b>HOVED BOLIG</b> <ul style="list-style-type: none"><li>• Lagerrom</li><li>• Bad on suite</li></ul>
<b>FLOARING</b> <ul style="list-style-type: none"><li>• Fliser</li><li>• Stein</li></ul>	<b>KJØKKEN</b> <ul style="list-style-type: none"><li>• Åpent kjøkken</li><li>• Hvitevarer</li><li>• Granit benkeplate</li></ul>	<b>HAGE TERASSER</b> <ul style="list-style-type: none"><li>• Ooverbygd terrasse</li></ul>	<b>EXTRA</b> <ul style="list-style-type: none"><li>• Innebygde garderober</li><li>• Sikkerhets dør</li><li>• Lager rom</li></ul>













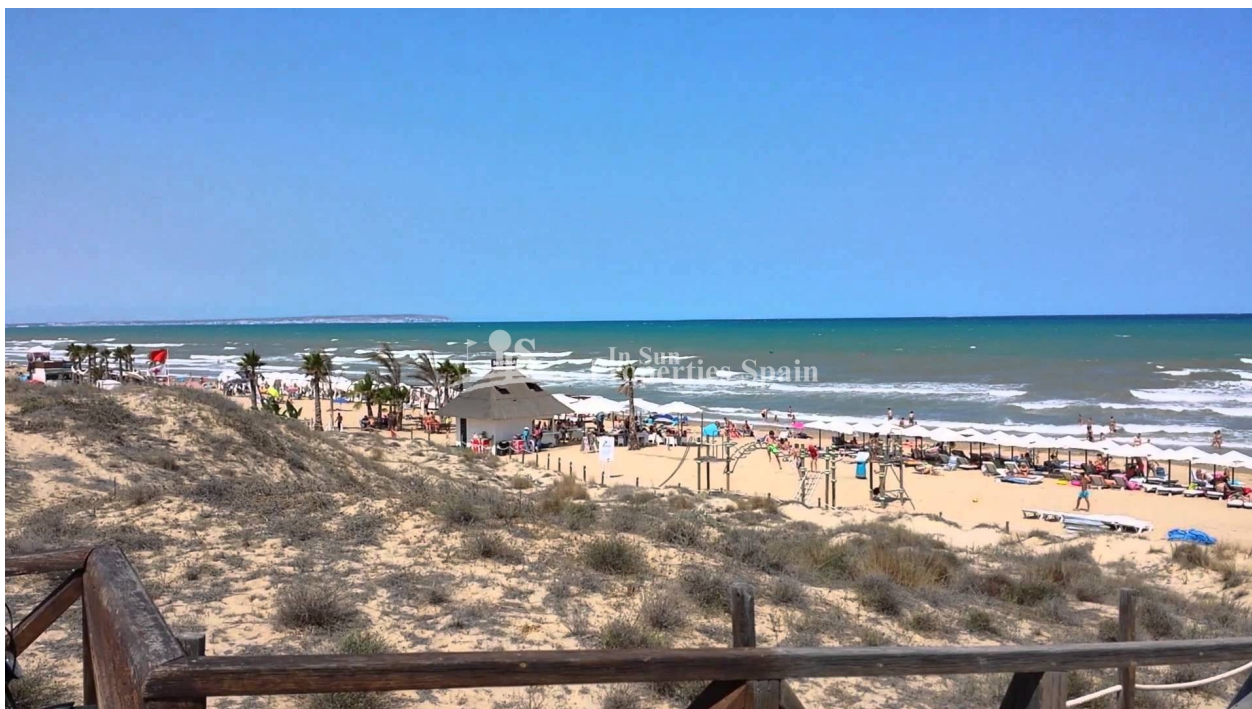












**"OUR EXPERIENCE IS YOUR GUARANTEE"**