



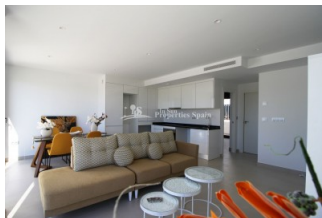
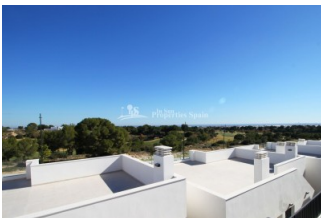
REF: # 7003

ORIHUELA COSTA (PILAR DE LA HORADADA)



#### INFO

PRIS:	230.900 €
BOLIG TYPE:	Villa
STED:	Orihuela Costa (Pilar de la Horadada)
SOVEROM:	3
Bad:	2
BOAREAL ( m2 ):	91
TOMT ( m2 ):	-
Terrasse ( m2 ):	84
ÅR:	
ETASJER:	-
MELDING	-



#### BESKRIVELSE

An exclusive development in LO ROMERO GOLF RESORT, PILAR DE LA HORADADA, JUST 6KM FROM THE BEACH. KEY READY One level detached villas with solarium designed to offer the maximum space, light and comfort in addition, the houses will have a parking space, communal swimming pool and garden area. This is a KEY READY, 3 bedroom 91m2 Villa with an open play layout, modern fitted kitchen in Brilliant white with Vitroceramic hob, oven and extractor hood, living dining space and 2 bathrooms. 94m2 private garden to enjoy entertaining family and friends and a sunny 84m2 solarium with sea views. TV & Telephone points in the living room and bedrooms. Pre-installation of AC by ducts. The location of Lo Romero is the envy of most. The course lay out of 18 holes lies in a natural landscape basin which is situated in the municipality of Pilar de la Horadada, a town in the province of Alicante. The area has around 300 days of sunshine per annum with an average annual mean temperature of 18°C. A destination location which has

everything to offer; beaches, blue seas, mountain ranges, sunshine, and of course Golf. Furthermore, there are other activities in this beautiful natural environment such as hiking, bike rides, equitation centres, etc. Lo Romero is perfectly linked by road to the cities of Alicante and Murcia. 40 minutes from Corvera Airport (RMU) and 50 minute from Alicante Airport (ALC)

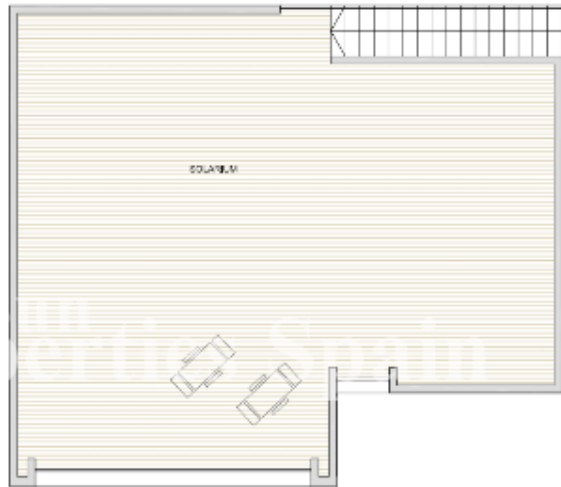
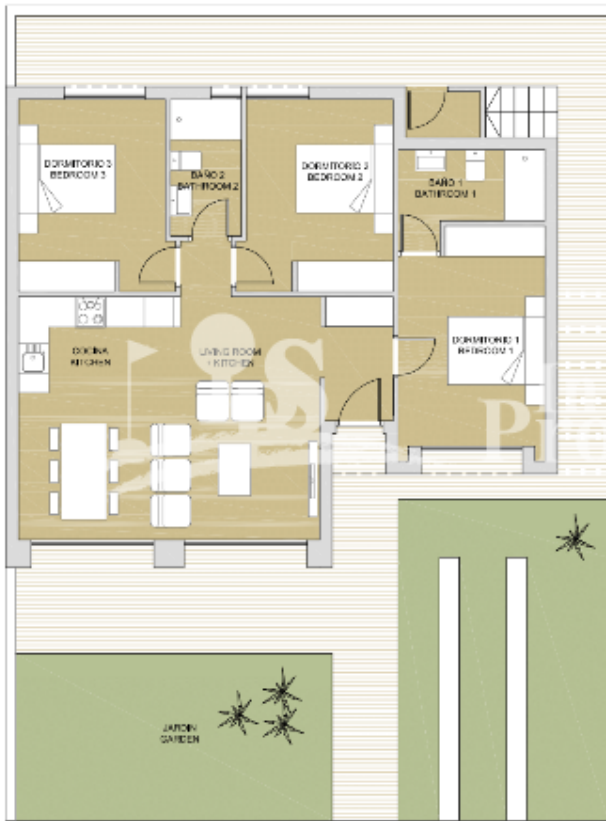


<b>STIL</b> <ul style="list-style-type: none"><li>• Modern</li><li>• Contemporary</li></ul>	<b>UTSIKT</b> <ul style="list-style-type: none"><li>• Panorama</li><li>• Sjø utsikt</li><li>• Fjell utsikt</li></ul>	<b>DISTANSE TIL :</b> <div>Strand : 6 Km</div> <div>Flyplass: 40 Km</div> <div>Sentrum : 4 Km</div>	<b>ORIENTERING</b> <div>South East West</div>
<b>MØBLER</b> <ul style="list-style-type: none"><li>• Uten møbler</li></ul>	<b>PARKERING NR BILER</b> <div>: 1</div>	<b>FLOARING</b> <ul style="list-style-type: none"><li>• Fliser</li><li>• Stein</li></ul>	<b>KJØKKEN</b> <ul style="list-style-type: none"><li>• Åpent kjøkken</li><li>• Hvitevarer</li><li>• Granit benkeplate</li></ul>
<b>HAGE TERASSER</b> <ul style="list-style-type: none"><li>• Åpen terrasse</li><li>• Opparbeidet hage</li><li>• Privat hage</li><li>• Felles hage</li></ul>	<b>EXTRA</b> <ul style="list-style-type: none"><li>• Innebygde garderober</li><li>• Sikkerhets dør</li><li>• Vinduer med dobbelt glass</li></ul>		

























**"OUR EXPERIENCE IS YOUR GUARANTEE"**