



REF: # 10381

ASPE



INFO

PRIS: 274.000 €

BOLIG TYPE: Villa

STED: Aspe

SOVEROM: 3

Bad: 2

BOAREAL (m2): 130

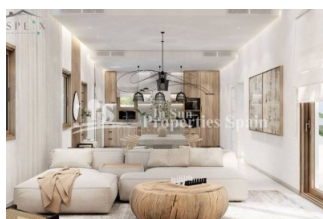
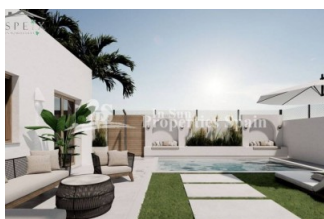
TOMT (m2): 450

Terrasse (m2): -

ÅR:

ETASJER: -

MELDING -



BESKRIVELSE

FANTASTIC INLAND NEW BUILD VILLA DETACHED IN ASPE, ALICANTE with beautiful mountain views. Are you looking for a new construction villa in Aspe? You have come to the right place!! The residential complex you have always dreamed of. You imagine those barbecues between friends in your own garden, those moments of relaxation reading a book while enjoying a sunset between the mountains... and you may well have imagined being able to enjoy those moments every day. That's what it's like to live in this new inland residential area, 25-minute drive to the airport, city and beaches. These 128m2 villas are built on individual plots of between 400m2, the urbanisation is newly built, scheduled for completion late 2023 and has several villas (128m2 build) on independent plots of 400m2 to 500m2. They have three bedrooms two bathrooms, including the main bedroom with en-suite bathroom, dressing room and a large window with direct access to the garden. It has a very large living-dining room that merges with an American-style kitchen with an island, altogether an area of 52.38 m2 that is perfect for day-to-day use. The villas are delivered to the buyer completely fenced with a wall, thus guaranteeing total privacy from the

first day. A private swimming pool is an option if required however not included in the price. From the point of signing a sales contract the estimated construction completion is 14 months. Alll this is just 4km from Aspe with schools, medical centre, shops, the central market, restaurants and entertainment venues very close. We also have the golf course just 13 km away What is it like to live in Aspe? Aspe is a municipality in the interior of the province of Alicante with 21,000 inhabitants located at the foot of the Sierra de Ofra where you can enjoy its beautiful landscapes. Aspe´s great location is only 30 km from the Alicante Airport and only 34 km from the beach. Furthermore it is just 15 km from the city of Elche and 32 km from Alicante city.



STIL	UTSIKT	DISTANSE TIL :	PARKERING NR BILER
<ul style="list-style-type: none"> Modern 	<ul style="list-style-type: none"> Fjell utsikt 	Strand : +10 Km Flyplass: 30 Km	: 1
HOVED BOLIG	KJØKKEN	HAGE TERASSER	ENERGETIC CERTIFIED
<ul style="list-style-type: none"> Bad on suite 	<ul style="list-style-type: none"> Åpent kjøkken 	<ul style="list-style-type: none"> Inngjerdet Privat hage 	 <p>The image shows a vertical energy efficiency scale with seven horizontal bars labeled A through G. Bar A is dark green and labeled 'A rom'. Bar B is green. Bar C is light green. Bar D is yellow. Bar E is orange-yellow. Bar F is orange. Bar G is red. To the right of these bars is a vertical green bar with the text 'IN PROGRESS' written vertically.</p>

"OUR EXPERIENCE IS YOUR GUARANTEE"