



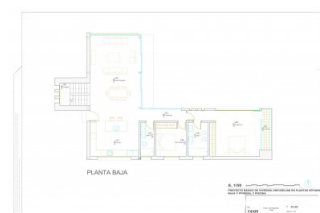
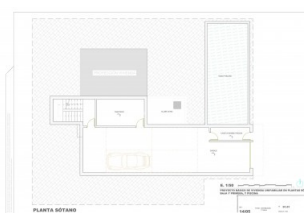
REF: # 3046

CALPE/MORAIRA (BENISSA COSTA)



#### INFO

PRIS:	650.000 €
BOLIG TYPE:	Villa
STED:	Calpe/Moraira (Benissa costa)
SOVEROM:	4
Bad:	4
BOAREAL ( m 2 ):	283
TOMT ( m2 ):	816
Terrasse ( m2 ):	-
ÅR:	
ETASJER:	3
MELDING	-



#### BESKRIVELSE

Luxury modern villa under construction along the coast of Benissa, just 600 meters from the sea. This modern beauty has been designed for people with taste and has been divided over three levels. The ground floor has a large living/dining room an open plan kitchen and two bedrooms and bathrooms, of which one en-suite. Next to the living room is the large, open sun terrace with infinity pool and partially covered terrace. The facade of the villa has large sliding doors and windows to optimally enjoy the light and gives the villa even a larger and airy feel. On

the first floor is the master bedroom with bathroom en-suite and dressing room and another bedroom with en-suite bathroom. On this floor both bedrooms come out onto a sun terrace of 45 m2. In the basement is the garage for 4 cars and a storage room and can be reached by stairs. Only high quality materials will be used and details like under floor heating, airconditioning, PVC and double glazed windows, automatic blinds etc. The villa should be ready by June 2015 and can be visited by you on appointment. There is a little harbor with sailing school and another bay with beach restaurant at walking distance from the property.



<b>STIL</b> <ul style="list-style-type: none"> <li>• Modern</li> </ul>	<b>UTSIKT</b> <ul style="list-style-type: none"> <li>• Sjø utsikt</li> <li>• Fjell utsikt</li> </ul>	<b>AIRCONDITION</b> <ul style="list-style-type: none"> <li>• Stue</li> <li>• Kjøkken</li> <li>• Soverom</li> </ul>	<b>DISTANSE TIL :</b> <div>Strand : 500 m</div> <div>Flyplass: 70 Km</div> <div>Sentrum : 1 Km</div>
<b>ORIENTERING</b> <div>South East West</div>	<b>MØBLER</b> <ul style="list-style-type: none"> <li>• Uten møbler</li> </ul>	<b>PARKERING NR BILER</b> <div>Garasje nr biler : 4</div>	<b>HOVED BOLIG</b> <ul style="list-style-type: none"> <li>• Lagerrom</li> <li>• Bad on suite</li> </ul>
<b>FLOORING</b> <ul style="list-style-type: none"> <li>• Fliser</li> </ul>	<b>KJØKKEN</b> <ul style="list-style-type: none"> <li>• Åpent kjøkken</li> <li>• Hvitevarer</li> </ul>	<b>HAGE TERASSER</b> <ul style="list-style-type: none"> <li>• Ooverbygd terrasse</li> <li>• Åpen terrasse</li> <li>• Inngjerdet</li> <li>• Stein murer</li> <li>• Elektrisk port</li> <li>• Privat hage</li> </ul>	<b>OPPVARMING</b> <ul style="list-style-type: none"> <li>• Sentral gas oppvarming</li> <li>• Gulv varme</li> <li>• Gulv varme bad</li> </ul>
<b>EXTRA</b> <ul style="list-style-type: none"> <li>• Innebygde garderober</li> <li>• Alarm</li> <li>• Sikkerhets dør</li> <li>• Vinduer med dobbelt glass</li> <li>• Vaske rom</li> </ul>	<b>ENERGETIC CERTIFIED</b> 		

"OUR EXPERIENCE IS YOUR GUARANTEE"