



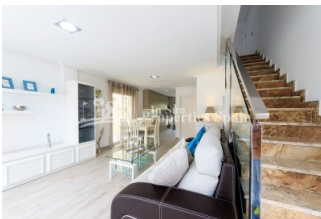
REF: # 4451

ORIHUELA COSTA (TORRE DE LA HORADADA )



#### INFO

PRIS:	400.000 €
BOLIG TYPE:	Villa
STED:	Orihuela Costa (Torre de la Horadada )
SOVEROM:	4
Bad:	3
BOAREAL ( m2 ):	125
TOMT ( m2 ):	233
Terrasse ( m2 ):	-
ÅR:	
ETASJER:	-
MELDING	-




#### BESKRIVELSE

Located in TORRE DE LA HORADADA just 250m from the SEA, this is a beautiful 4 bedroom, 3 bathroom DETACHED VILLA with PRIVATE POOL. Offering elegance, privacy and sophistication combined with modern white lines and contemporary stone. Set within a 233m2 plot, this 125m2 Villa comes complete with BBQ to the SOLARIUM, under floor heating in the Lounge, Kitchen and Bathroom, a lighting pack and parking in the GARAGE. Torre de la Horadada is a coastal resort located on the Southern Costa Blanca with some fine sandy beaches which are ideal for families with children. There are two airports close to Torre de la Horadada which are Alicante and Murcia. A wide range of amenities are on hand from a large shopping centre, police and health services to a large selection of restaurants, cafes and bars. It is is your typical Spanish sea side resort with villas, townhouses and apartments located on urbanisations. Very close to the border of Alicante and Murcia, Torre de

la Horadada together with Pilar de la Horadada and El Mojon is one of the Costa Blanca's southernmost resorts, head any further south and you will find yourself on the Costa Calida and the resorts of the Mar Menor, a little further and you will reach the city of Cartagena with its ancient Roman and Carthaginian ruins. All in all, a perfect place to own a home in the Mediterranean sun!



STIL	UTSIKT	DISTANSE TIL :	ORIENTERING
<ul style="list-style-type: none"> <li>• Modern</li> <li>• Contemporary</li> </ul>	<ul style="list-style-type: none"> <li>• Panorama</li> </ul>	Strand : 200 m Flyplass: 40 Km Sentrum : 1 Km	South East West
PARKERING NR BILER	FLOARING	KJØKKEN	HAGE TERASSER
Garasje nr biler : 1 : 1	<ul style="list-style-type: none"> <li>• Fliser</li> <li>• Stein</li> </ul>	<ul style="list-style-type: none"> <li>• Åpent kjøkken</li> <li>• Hvitevarer</li> <li>• Granit benkeplate</li> </ul>	<ul style="list-style-type: none"> <li>• Ooverbygd terrasse</li> <li>• Åpen terrasse</li> <li>• Opparbeidet hage</li> <li>• Stein murer</li> <li>• Barbeque</li> <li>• Privat hage</li> </ul>
OPPVARMING	EXTRA	ENERGETIC CERTIFIED	
<ul style="list-style-type: none"> <li>• Gulv varme</li> <li>• Gulv varme bad</li> </ul>	<ul style="list-style-type: none"> <li>• Innebygde garderober</li> <li>• Sikkerhets dør</li> <li>• Vinduer med dobbelt glass</li> </ul>	 <p>The image shows a vertical energy efficiency scale with seven horizontal bars labeled A through G. The bars are colored in a gradient from green at the top to red at the bottom. Bar A is green, B is green, C is light green, D is yellow, E is orange, F is red-orange, and G is red. To the right of the scale is a vertical green bar with the text 'IN PROGRESS' written vertically inside it.</p>	

**"OUR EXPERIENCE IS YOUR GUARANTEE"**