



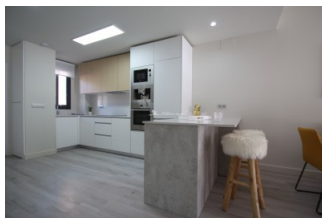
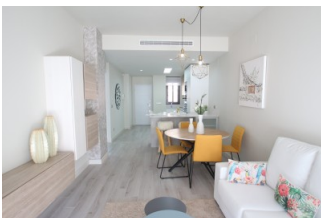
REF: # 4535

ORIHUELA COSTA (GUARDAMAR)



#### INFO

PRIS:	185.900 €
BOLIG TYPE:	Leilighet
STED:	Orihuela Costa (Guardamar)
SOVEROM:	2
Bad:	2
BOAREAL ( m2 ):	68
TOMT ( m2 ):	-
Terrasse ( m2 ):	-
ÅR:	
ETASJER:	-
MELDING	-




#### BESKRIVELSE

KEY READY development in GUARDAMAR DEL SEGURA only 800m from the sea! Set over 7 floors with elevator, communal swimming pool, parking area and green areas. Each floor has only 4 homes distributed in large living room, kitchen and 2 bedrooms with 2 bathrooms, one en-suite. Sea views from the 5th floor! Floors 6 and 7 comprise of 4 duplex Apartments with 2 bedrooms, 2 bathrooms with large terraces, where the master bedroom has a dressing room. The building has sea views from the fifth floor. Parking place included in the price. LIMITED AVAILABILITY: 2 bed Ground floor of 68m2 185,900€ and 2 bed Atic Duplex with furniture pack and white good included 263,900€. In an unbeatable location next to a major supermarket and a short walk from the city center, just 1 km from the magnificent beaches of Guardamar famous for its fine white sand. Guardamar del Segura is a typical Spanish town historically it was an area of fishermen and farmers. It not only has some of the best beaches in Spain, it also has an excellent

street market every Wednesday morning and some brilliant shops, bars and restaurants. It is about 30 minutes drive south from Alicante airport and about 40 minutes drive north from San Javier airport (also known as Murcia airport). The nearest neighboring village is La Mata, a typical laid-back Spanish village by the beach.



STIL	UTSIKT	DISTANSE TIL :	ORIENTERING
<ul style="list-style-type: none"> <li>Modern</li> <li>Contemporary</li> </ul>	<ul style="list-style-type: none"> <li>Panorama</li> </ul>	Strand : 2 Km Flyplass: 50 Km Sentrum : 2 Km	South East West
MØBLER	FLOARING	KJØKKEN	HAGE TERASSER
<ul style="list-style-type: none"> <li>Uten møbler</li> </ul>	<ul style="list-style-type: none"> <li>Fliser</li> <li>Stein</li> </ul>	<ul style="list-style-type: none"> <li>Åpent kjøkken</li> <li>Hvitevarer</li> <li>Granit benkeplate</li> </ul>	<ul style="list-style-type: none"> <li>Ooverbygd terrasse</li> <li>Åpen terrasse</li> <li>Opparbeidet hage</li> <li>Felles hage</li> </ul>
EXTRA	ENERGETIC CERTIFIED		
<ul style="list-style-type: none"> <li>Innebygde garderober</li> <li>Sikkerhets dør</li> <li>Vinduer med dobbelt glass</li> </ul>	 <p>The image shows a vertical energy efficiency scale with seven horizontal bars labeled A through G. The bars are colored in a gradient from green at the top to red at the bottom. A green vertical bar on the right side of the scale is labeled 'IN PROGRESS'.</p>		

**"OUR EXPERIENCE IS YOUR GUARANTEE"**