



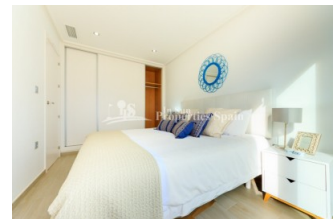
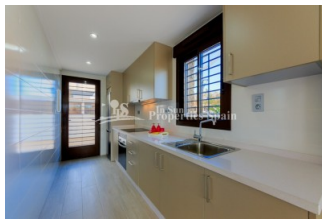
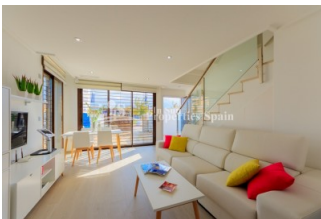
REF: # 5789

ORIHUELA COSTA (TORRE DE LA HORADADA)



INFO

PRIS:	214.000 €
BOLIG TYPE:	Leilighet
STED:	Orihuela Costa (Torre de la Horadada)
SOVEROM:	3
Bad:	2
BOAREAL (m2):	79
TOMT (m2):	-
Terrasse (m2):	-
ÅR:	
ETASJER:	-
MELDING	208.000 €




BESKRIVELSE

New stunning project just 400m from the sea at TORRE DE LA HORADADA! from a builder with over 30 years construction experience. 2/3 bedroom, 2 bathroom Bungalows (Apt Ground floor or Top Floor - some with Garage parking and some with roof solarium) that combine mediterranean style with modern and contemporary finish and a beautiful stone facade. All set within lovely communal areas with salt water pool, children's pool and Jacuzzi. 2 bed, 2 bath Ground floor from €224,000 and top floor from €229,000. Also available are 3 bed, 2 bath Townhouses from €280,000. Situated close to both Alicante and Javier Airport, a short walk to the beach, a few minutes from the golf course, leisure areas, supermarkets, hospital and medical centre. Typically Spanish Torre de la Horadada is easily recognisable by its watchtower. It has a large village square, a church, a couple of lovely sandy beaches, a quaint marina and a long promenade which joins the beaches of El

Mojón to the south and Mil Palmeras to the north. A perfect place to own a home in the sun! Delivery from April 2020



STIL	UTSIKT	DISTANSE TIL :	ORIENTERING
<ul style="list-style-type: none"> Modern Contemporary 	<ul style="list-style-type: none"> Panorama 	Strand : 500 m Flyplass: 20 Km Sentrum : 500 m	South East West
MØBLER	PARKERING NR BILER	FLOORING	KJØKKEN
<ul style="list-style-type: none"> Uten møbler 	Garasje nr biler : 1 : 1	<ul style="list-style-type: none"> Fliser Stein 	<ul style="list-style-type: none"> Åpent kjøkken Hvitevarer Granit benkeplate
HAGE TERASSER	EXTRA	ENERGETIC CERTIFIED	
<ul style="list-style-type: none"> Ooverbygd terrasse Åpen terrasse Opparbeidet hage Stein murer Privat hage Felles hage 	<ul style="list-style-type: none"> Innebygde garderober Sikkerhets dør Vinduer med dobbelt glass 	 <p>The image shows a vertical energy efficiency scale with seven horizontal bars labeled A through G. The bars are colored in a gradient from green at the top to red at the bottom. A vertical green bar on the right side of the scale is labeled 'IN PROGRESS'.</p>	

"OUR EXPERIENCE IS YOUR GUARANTEE"