



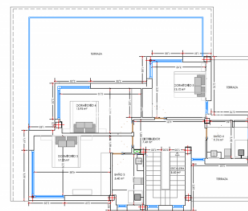
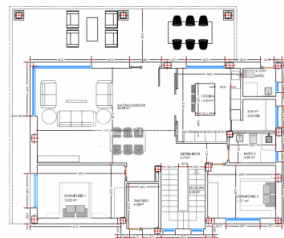
REF: # 5812

ORIHUELA COSTA



#### INFO

PRIS:	835.000 €
BOLIG TYPE:	Villa
STED:	Orihuela Costa
SOVEROM:	5
Bad:	4
BOAREAL ( m2 ):	257
TOMT ( m2 ):	700
Terrasse ( m2 ):	-
ÅR:	
ETASJER:	-
MELDING	-




#### BESKRIVELSE

OUTSTANDING 257m2 detached villa with a private 4m x 8m swimming pool on a plot size of 700m2. The villa is located in CAMPOAMOR only 400m from the beach! This stunning villa will have five bedrooms, four bathrooms and ample sun terraces. The builders are well known in this area for their excellent workmanship and elegant designs of their properties. In addition, the Villa boasts fitted wardrobes, security gate, automatic blinds, pre-installed air con ducts, kitchen fitted with top and bottom units with synthetic quartz worktops, stainless steel sink and extractor, energy saving system using aerotermia for hot water, shower screens. The build time is 15 months from signing the contract. Campoamor is located between Cabo Roig and Mil Palmeras on the Orihuela Costa. A superb seaside resort with a good range of facilities and a couple of wonderful sandy beaches. There are three nearby golf courses at Campoamor, Villamartin and Las Ramblas. There is a regular bus service heading north to Alicante and south to Cartagena. Alicante

Airport is approx 50km away and Murcia Airport just 25km



STIL	UTSIKT	DISTANSE TIL :	ORIENTERING
<ul style="list-style-type: none"> <li>Modern</li> <li>Contemporary</li> </ul>	<ul style="list-style-type: none"> <li>Panorama</li> </ul>	Strand : 500 m Flyplass: 50 Km Sentrum : 1 Km	South East West
MØBLER	PARKERING NR BILER	FLOORING	KJØKKEN
<ul style="list-style-type: none"> <li>Uten møbler</li> </ul>	: 2	<ul style="list-style-type: none"> <li>Fliser</li> </ul>	<ul style="list-style-type: none"> <li>Åpent kjøkken</li> <li>Hvitevarer</li> <li>Granit benkeplate</li> </ul>
HAGE TERASSER	EXTRA	ENERGETIC CERTIFIED	
<ul style="list-style-type: none"> <li>Ooverbygd terrasse</li> <li>Åpen terrasse</li> <li>Opparbeidet hage</li> <li>Stein murer</li> <li>Elektrisk port</li> <li>Privat hage</li> </ul>	<ul style="list-style-type: none"> <li>Utendørs boblebad</li> <li>Innebygde garderober</li> <li>Alarm</li> <li>Sikkerhets dør</li> <li>Vinduer med dobbelt glass</li> <li>Lager rom</li> <li>Vaske rom</li> </ul>	 <p>The image shows a vertical energy efficiency scale with seven horizontal bars labeled A through G. The bars are colored in a gradient from green at the top to red at the bottom. A vertical green bar on the right side of the scale is labeled 'IN PROGRESS'.</p>	

**"OUR EXPERIENCE IS YOUR GUARANTEE"**