



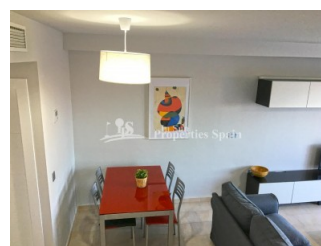
REF: # 5817

ORIHUELA COSTA (TORRE DE LA HORADADA)



INFO

PRIS:	225.000 €
BOLIG TYPE:	Rekkehus
STED:	Orihuela Costa (Torre de la Horadada)
SOVEROM:	3
Bad:	2
BOAREAL (m2):	100
TOMT (m2):	-
Terrasse (m2):	-
ÅR:	-
ETASJER:	-
MELDING	-

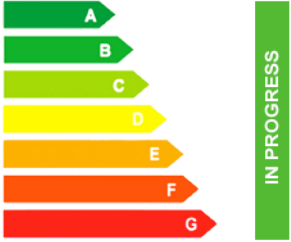


BESKRIVELSE

A delightful 3 bedroom, 2 bathroom TOWNHOUSE located just 200m from PLAYA EL MOJON, TORRE DE LA HORADADA, boasting STUNNING SEA VIEWS and just a 2 minute walk to local amenities and the beautiful beaches of the Mar Menor. Set over 3 levels; the ground floor of this property consists of a spacious lounge/dining room, separate kitchen, downstairs bedroom and family bathroom. The back terrace has the utility room housing the washing machine and dryer. Stairs from the lounge lead to the first floor which comprises two double bedrooms and a family bathroom. The master bedroom boasts a private balcony. The townhouse also has a roof solarium. The property has been completely refurbished including all new doors, painting, furniture and appliances. This is an excellent family home, close to all amenities, schools and health centers. 5 minutes from the marina of La Torre de la Horadada

and 10 minutes from the marinas of San Pedro del Pinatar and the best restaurants and not to forget proximity to the AP7 highway that connects this residential with two airports to international destinations; 15km from San Javier and 75km from Altet, Alicante.



STIL	UTSIKT	DISTANSE TIL :	ORIENTERING
<ul style="list-style-type: none"> Modern Mediterranean 	<ul style="list-style-type: none"> Sjø utsikt 	Strand : 200 m <hr/> Flyplass: 20 Km <hr/> Sentrum : 200 m	South East West <hr/>
MØBLER	FLOARING	KJØKKEN	HAGE TERASSER
<ul style="list-style-type: none"> Furnished 	<ul style="list-style-type: none"> Fliser Stein 	<ul style="list-style-type: none"> Åpent kjøkken Hvitevarer 	<ul style="list-style-type: none"> Åpen terrasse Privat hage
EXTRA	ENERGETIC CERTIFIED		
<ul style="list-style-type: none"> Vaske rom 	 <p>The image shows a vertical energy efficiency scale with seven horizontal bars labeled A through G. The bars are colored in a gradient from green at the top to red at the bottom. A green vertical bar on the right side of the scale is labeled 'IN PROGRESS'.</p>		

"OUR EXPERIENCE IS YOUR GUARANTEE"