



REF: # 5895

ALICANTE



INFO

PRIS: 240.000 €

BOLIG TYPE: Villa (Semi detached)

STED: Alicante

SOVEROM: 4

Bad: 3

BOAREAL (m2): 99

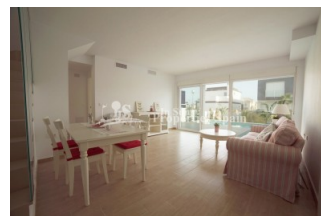
TOMT (m2): 205

Terrasse (m2): -

ÅR:

ETASJER: -

MELDING -



BESKRIVELSE

This is a new development in GRAN ALACANT, close to the N332 and Gran Alacant Commercial Centre, 5 minutes from the beach. The semi-detached Villas are flexible with a modern design and first-hand qualities, comfortable and bright. Delivery is in 24 months. It is a two-story house, semi-detached. Built on a 205/215m2 plot which includes a terrace, front porch and modern swimming pool that measures 6x3 and 2x2 meters. This model has the option of adding a finished or semi-finished basement. Through the choice of materials, finishes and distribution, the house can be adapted according to the needs of each client. Choice of options; between 2, 3 or 4 bedrooms, 3 bathrooms and an American kitchen open plan to the living room or independent. You have the possibility of distributing the rooms according to the desired preferences. Qualities include; Flooring: option of first quality ceramic tiles or laminate flooring. High security main door with 5 anchor points. White windows with thermal bridge break and shutters Climalit throughout the house, except bathrooms. Smooth plastic paint on walls and ceilings in white.

High pressure laminate kitchen furniture brand DM and compact quartz countertop included, both materials have different options to choose from. Pre-installation of air conditioning ducts throughout the house. Included water heater Aerothermo (renewable energy system). Swimming pool of 6x3m with an access ramp of 2.8x2m from the facade of the house. Includes water filters, interior light and independent pump room on the plot. Parking space on the surface. Nearby you will find fine sandy beaches like El CARABASSI BEACH that combines sand dunes and pine groves with the possibility to do nautical sports in authorised spaces. It also has a large maritime promenade in ARENALES DEL SOL, which becomes populated with walkers, cyclists and runners. There are endless services in the area such as: Shopping centers, shops, sports centers, schools, medical services, pharmacies, banking entities, administrative offices, library, church, parks, etc. Less than 5 minutes to the beach, 10 minutes to the airport and 15 minutes to the city center of Alicante and Elche.



STIL	UTSIKT	DISTANSE TIL :	ORIENTERING
<ul style="list-style-type: none"> Modern Contemporary 	<ul style="list-style-type: none"> Panorama 	Strand : 1 Km Flyplass: 10 Km Sentrum : 1 Km	South East West
MØBLER	PARKERING NR BILER	FLOARING	KJØKKEN
<ul style="list-style-type: none"> Uten møbler 	: 1	<ul style="list-style-type: none"> Fliser Stein 	<ul style="list-style-type: none"> Åpent kjøkken Hvitevarer
HAGE TERASSER	EXTRA	ENERGETIC CERTIFIED	
<ul style="list-style-type: none"> Ooverbygd terrasse Åpen terrasse Opparbeidet hage Privat hage 	<ul style="list-style-type: none"> Innebygde garderober Sikkerhets dør Vinduer med dobbelt glass 	 <p>The image shows a vertical energy efficiency scale with seven horizontal bars labeled A through G. The bars are colored in a gradient from dark green at the top to red at the bottom. A vertical green bar on the right side of the scale is labeled 'IN PROGRESS'.</p>	

"OUR EXPERIENCE IS YOUR GUARANTEE"