



REF: # 6133

BENITACHELL



INFO

PRIS: 710.000 €

BOLIG TYPE: Villa

STED: Benitachell

SOVEROM: 3

Bad: 2

BOAREAL (m2): 344

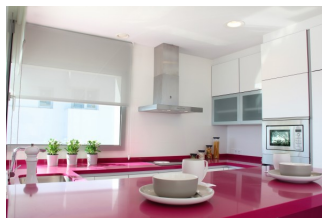
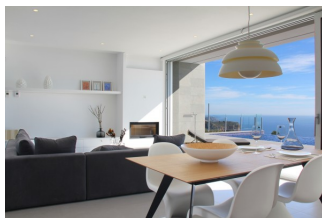
TOMT (m2): 968

Terrasse (m2): -

ÅR: -

ETASJER: -

MELDING: -



BESKRIVELSE

Contemporary style, modern villa designed to be built on the plots of the Cumbre del Sol urbanisation, specifically in the Lirios Design residential area. It is a house distributed in two heights, with a total built area of 358,25m², located on a plot of more than 740m², fully fenced. It has 3 bedrooms and 2 bathrooms, the master bedroom with en suite bathroom and large fitted wardrobes, large living room with fireplace, fully equipped kitchen, separate storage room, covered parking with pergola directly connected to the main entrance of the house and with a motorised door. The large terrace of more than 77.60m² in which the infinity pool is located and from which you can enjoy an amazing view of the sea is outstanding. It has ground floor semi-basement of 80.85m² for additional bedroom, gym, study, etc. A villa with southeast orientation and fantastic sea views. It is worth highlighting the modern design of its façade, a combination of straight forms, cantilevers that create shadow spaces, flat roofs, large windows and white walls decorated with elements in stone. A villa with southeast orientation and fantastic sea views. Prices from 640 - 710.000€

ENERGETIC CERTIFIED



UTSIKT

- Panorama
- Sjø utsikt

ENERGETIC CERTIFIED



"OUR EXPERIENCE IS YOUR GUARANTEE"