



REF: # 6146

BENITACHELL



#### INFO

PRIS: 985.000 €

BOLIG TYPE: Villa

STED: Benitachell

SOVEROM: 3

Bad: 3

BOAREAL ( m2 ): 351

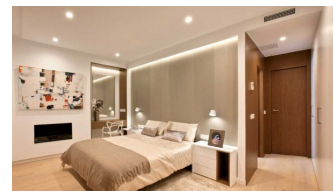
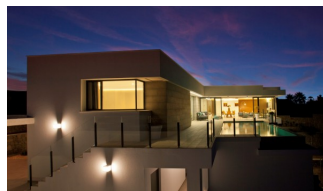
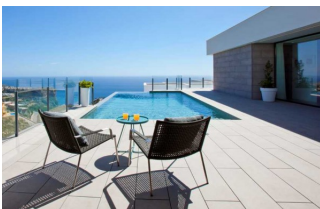
TOMT ( m2 ): 929

Terrasse ( m2 ): -

ÅR: -

ETASJER: -

MELDING: -



#### BESKRIVELSE

The house has been conceived as the union of several open modules and joined by the outside area, creating a fusion between the interior and exterior, obtaining an open, bright and functional housing. Homes of more than 351m<sup>2</sup> built on plots of 929m<sup>2</sup> with fantastic sea views and unique sunrises. Distributed in two heights, the upper floor houses a module for the night area, with a large master bedroom with bathroom en suite and two other bedrooms separated by a bathroom that serves both. The day module houses the entrance hall, guest toilet, and the tandem formed by a large living room and kitchen that are integrated or separated, depending on the needs of each moment, through a mobile wall. Both modules converge in the outdoor area with the terrace and infinity pool as protagonists. On the ground floor we find a large space, of more than 68m<sup>2</sup>, destined to a guest apartment, or simply a leisure area, with a private terrace and an independent installation room. With parking space with pergola and storage.

#### ENERGETIC CERTIFIED



UTSIKT

- Panorama
- Sjø utsikt

ENERGETIC CERTIFIED



**"OUR EXPERIENCE IS YOUR GUARANTEE"**