



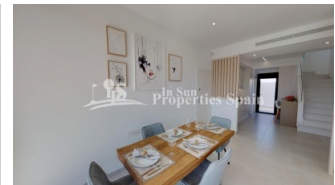
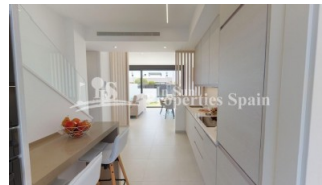
REF: # 6380

COSTA MURCIA (SAN PEDRO DEL PINATAR)



INFO

PRIS:	329.950 €
BOLIG TYPE:	Villa
STED:	Costa Murcia (San Pedro del Pinatar)
SOVEROM:	3
Bad:	3
BOAREAL (m2):	128
TOMT (m2):	190
Terrasse (m2):	52
ÅR:	
ETASJER:	-
MELDING	-



BESKRIVELSE

New release of the popular premium Villas in SAN PEDRO DEL PINATAR, 600m/8 minutes walk from the beach. These 3 bedroom, 3 bathroom homes of 128m2 build are on minimum 190m2 plots and set in a nice residential area. Each with their own private pool, 52m2 garden and garage. Just 700m from the beaches. These off plan villas will have 2 levels and comprise of a large spacious open plan lounge with dining area and separate kitchen which comes fitted with modern design wall and base units equipped with Hob, oven and extractor fan. The 3 double bedrooms all come with fitted wardrobes and both first floor models have private bathrooms, there is also a family bathroom and utility room on the ground floor. Outside the property a generous garden with drive leading to a garage plus large patio areas offering lots of 'alfresco dining' options for an outdoor kitchen (next to the pool area), a private pool. The properties also come with installed air-con, kitchen appliances and pool cascade. Optional solarium (+15,500€) This 'exclusive' development off private homes are situated in a residential area – close to all

amenities(8min walk), park areas, the beach (8min walk), bars, shops and restaurants. The Mar Menor and all the facilities it has to offer is just a short 10 minute walk away, there are many golf courses nearby. This 'exclusive' development of private homes are situated in a residential area – close to all amenities, walking distance to park areas, the beach, bars, shops and restaurants.



STIL	UTSIKT	DISTANSE TIL :	ORIENTERING
<ul style="list-style-type: none"> Modern Contemporary 	<ul style="list-style-type: none"> Panorama 	Strand : 500 m Flyplass: 20 Km Sentrum : 1 Km	South East West
MØBLER	PARKERING NR BILER	FLOARING	KJØKKEN
<ul style="list-style-type: none"> Uten møbler 	Garasje nr biler : 1	<ul style="list-style-type: none"> Fliser Stein 	<ul style="list-style-type: none"> Åpent kjøkken Hvitevarer
HAGE TERASSER	EXTRA	ENERGETIC CERTIFIED	
<ul style="list-style-type: none"> Ooverbygd terrasse Åpen terrasse Privat hage 	<ul style="list-style-type: none"> Innebygde garderober Sikkerhets dør Vinduer med dobbelt glass 	 <p>The image shows a vertical energy efficiency scale with seven horizontal bars labeled A through G. The bars are colored in a gradient from green at the top to red at the bottom. A vertical green bar on the right side of the scale is labeled 'IN PROGRESS'.</p>	

"OUR EXPERIENCE IS YOUR GUARANTEE"