



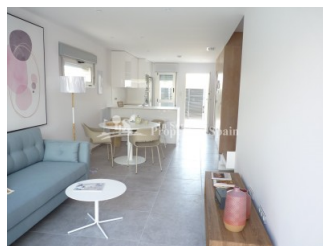
REF: # 6870

COSTA MURCIA (SANTIAGO DE LA RIBERA )



#### INFO

PRIS:	188.000 €
BOLIG TYPE:	Rekkehus
STED:	Costa Murcia (Santiago de la Ribera )
SOVEROM:	3
Bad:	2
BOAREAL ( m2 ):	97
TOMT ( m2 ):	-
Terrasse ( m2 ):	39
ÅR:	-
ETASJER:	-
MELDING	182.000 €

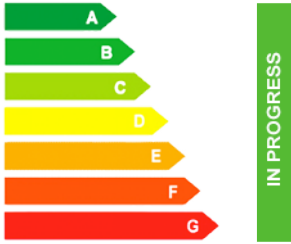


#### BESKRIVELSE

Located a little over a 5 minute walk from the beaches of the Mar Menor and close to Dos Mares Commercial centre is this new development in SANTIAGO DE LA RIBERA. The development offers 3 bed 2 bath Townhouses of approx 97m2 (central or corner) in a lovely residential development with community swimming pool. The plots feature off street parking and ample outside space to entertain family and friends. Set over two floors the accommodation distributes as; Ground floor with open plan living/dining area, modern fitted kitchen, one bedroom with terrace and a bathroom. The first floor has two further bedrooms, one with balcony, a family bathroom and access to the 39'39m2 roof solarium. The community has nice gardens and a communal pool. The development is in a central location just 10 minutes from the centres of Lo Pagan and La Ribera, less than 10 minutes to the Marina of La Ribera, 10 minutes from

Sporting facilities, 15 minutes from a number of prestigious Golf Courses, 5 minutes from the famous Mud Baths, 15 minutes from the Train station at Balsicas with connections through to Madrid and 30 minutes from the Historic Cities of Murcia and Cartagena. Delivery December 2019.



STIL	UTSIKT	DISTANSE TIL :	ORIENTERING
<ul style="list-style-type: none"> <li>Modern</li> <li>Contemporary</li> </ul>	<ul style="list-style-type: none"> <li>Panorama</li> </ul>	Strand : 500 m Flyplass: 40 Km Sentrum : 1 Km	South East West
MØBLER	PARKERING NR BILER	FLOORING	KJØKKEN
<ul style="list-style-type: none"> <li>Uten møbler</li> </ul>	: 1	<ul style="list-style-type: none"> <li>Fliser</li> </ul>	<ul style="list-style-type: none"> <li>Åpent kjøkken</li> <li>Hvitevarer</li> </ul>
HAGE TERASSER	EXTRA	ENERGETIC CERTIFIED	
<ul style="list-style-type: none"> <li>Åpen terrasse</li> <li>Stein murer</li> <li>Privat hage</li> <li>Felles hage</li> </ul>	<ul style="list-style-type: none"> <li>Innebygde garderober</li> <li>Sikkerhets dør</li> <li>Vinduer med dobbelt glass</li> </ul>	 <p>The image shows a vertical energy efficiency scale with seven horizontal bars labeled A through G. The bars are colored in a gradient from dark green at the top to red at the bottom. To the right of the scale is a vertical green bar with the text 'IN PROGRESS' written vertically inside it.</p>	

*"OUR EXPERIENCE IS YOUR GUARANTEE"*