



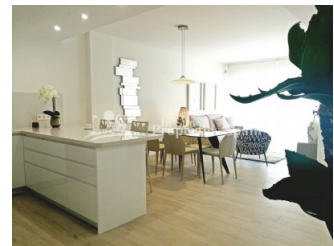
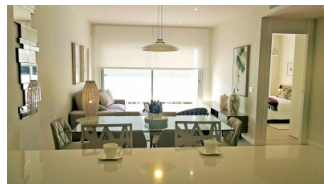
REF: # 6938

ORIHUELA COSTA (VILLAMARTIN LOS DOLSES)



INFO

PRIS:	250.000 €
BOLIG TYPE:	Rekkehus
STED:	Orihuela Costa (Villamartin Los Dolles)
SOVEROM:	3
Bad:	2
BOAREAL (m2):	130
TOMT (m2):	-
Terrasse (m2):	70
ÅR:	
ETASJER:	-
MELDING	-




BESKRIVELSE

3 bedroom, 2 bathroom Triplex in LOS DOLSES, VILLAMARTIN within this popular south/west facing project. This is a beautiful KEY READY modern 130m2 property constructed with top quality materials. To the ground floor you have an open plan concept with lounge, dining area and modern fitted kitchen plus a double bedroom and guest toilet. There is also access to the 37'25m2 basement, which could be utilised as a games room or further living accommodation. To the first floor there are two further bedrooms and 2 bathrooms with access to the sunny 40m2 roof solarium. In addition to the 30m2 private terrace the community has a swimming pool and is gated. Walking distance to restaurants, bars and supermarkets and 3km to the sandy beaches of Orihuela Costa . Within a short drive you have access to a number of championship golf courses including Villamartin, Campoamor, Las Ramblas and Las Colinas, With

the new pdstrian alkway you can now also access Zenia Boulevard easily on foot. Just 50 mins from Alicante and Corvera Airport.



STIL	UTSIKT	DISTANSE TIL :	ORIENTERING
<ul style="list-style-type: none"> Modern Contemporary 	<ul style="list-style-type: none"> Panorama 	Strand : 2 Km Flyplass: 50 Km Sentrum : 1 Km	South East West
MØBLER	PARKERING NR BILER	FLOORING	KJØKKEN
<ul style="list-style-type: none"> Uten møbler 	: 1	<ul style="list-style-type: none"> Fliser Stein 	<ul style="list-style-type: none"> Åpent kjøkken Hvitevarer Granit benkeplate
HAGE TERASSER	EXTRA	ENERGETIC CERTIFIED	
<ul style="list-style-type: none"> Ooverbygd terrasse Åpen terrasse Opparbeidet hage Stein murer Privat hage Felles hage 	<ul style="list-style-type: none"> Innebygde garderober Sikkerhets dør Vinduer med dobbelt glass 	 <p>The image shows a vertical energy efficiency scale with seven levels, A through G, represented by horizontal bars of increasing length and changing colors from green at the top to red at the bottom. Level A is the shortest (green), B is slightly longer (light green), C is longer (yellow-green), D is longer (yellow), E is longer (orange-yellow), F is longer (orange), and G is the longest (red). To the right of this scale is a vertical green bar with the text 'IN PROGRESS' written vertically inside it, positioned between the D and E levels.</p>	

"OUR EXPERIENCE IS YOUR GUARANTEE"