



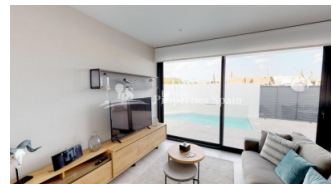
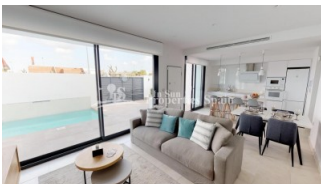
REF: # 7014

COSTA MURCIA (SAN JAVIER)



#### INFO

PRIS:	274.950 €
BOLIG TYPE:	Villa
STED:	Costa Murcia (San Javier)
SOVEROM:	3
Bad:	2
BOAREAL ( m2 ):	91
TOMT ( m2 ):	258
Terrasse ( m2 ):	-
ÅR:	-
ETASJER:	-
MELDING	-



#### BESKRIVELSE

This new release project "Monte Vista" offers stunning 3 bedroom, 2 bathroom Villas just 200m from MAR DE CRISTAL BEACH, SAN JAVIER. This small project offers Villas on one level with generous open terraces and a large rooftop solarium. These off plan villas will be constructed within 10 months from contract and feature a large spacious open plan lounge with dining area and separate kitchen which for a limited time comes with appliances. The 3 double bedrooms all come with fitted wardrobes and the master of which is en-suite, there is also a family bathroom and utility room – all 3 bedrooms have access to a unique rear enclosed patio area. Outside the property ... a terrace with walkway and patio areas offering lots of 'alfresco dining' options for a private pool, driveway for off road parking and an external staircase to access the roof solarium. For a limited time, the Villas also come with Installed AC, Interior and exterior LED lighting, BBQ, Private pool and LED mirrors in both bathrooms. The Mar Menor is the ideal destination to spend some warm days of rest in charming and peaceful towns such as Lo Pagán, San Pedro del Pinatar, Santiago de la Ribera, San Javier, Los Alcázares, Mar de Cristal, Playa Honda, Islas Menores, Los Urrutias and

Los Nietos, of beaches mostly awarded with the Blue Flag of the European Community. You will find all the amenities for daily living and a relaxing vacation on hand. 30 minutes from Murcia Corvera (RMU) Airport. Delivery in 10 months



STIL	AIRCONDITION	DISTANSE TIL :	ORIENTERING
<ul style="list-style-type: none"> <li>Modern</li> <li>Contemporary</li> </ul>	<ul style="list-style-type: none"> <li>Sentral aircondition</li> </ul>	Strand : 200 m Flyplass: 30 Km Sentrum : 1 Km	South East West
MØBLER	PARKERING NR BILER	HOVED BOLIG	FLOORING
<ul style="list-style-type: none"> <li>Uten møbler</li> </ul>	: 2	<ul style="list-style-type: none"> <li>Bad on suite</li> </ul>	<ul style="list-style-type: none"> <li>Fliser</li> <li>Stein</li> </ul>
KJØKKEN	HAGE TERASSER	EXTRA	ENERGETIC CERTIFIED
<ul style="list-style-type: none"> <li>Åpent kjøkken</li> <li>Hvitevarer</li> </ul>	<ul style="list-style-type: none"> <li>Åpen terrasse</li> <li>Stein murer</li> <li>Privat hage</li> </ul>	<ul style="list-style-type: none"> <li>Innebygde garderober</li> <li>Sikkerhets dør</li> <li>Vinduer med dobbelt glass</li> </ul>	 <p>The image shows a vertical energy efficiency scale with seven horizontal bars labeled A through G. The bars are colored in a gradient from dark green at the top to red at the bottom. To the right of the scale is a vertical green bar with the text 'IN PROGRESS' written vertically.</p>

*"OUR EXPERIENCE IS YOUR GUARANTEE"*