



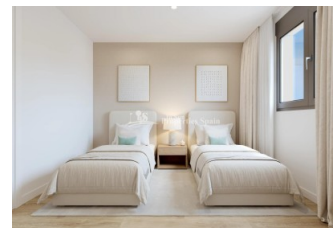
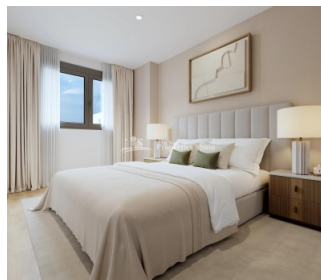
REF: # 12853

ALICANTE (ALICANTE CITY CENTRE)



INFO

PRIS:	225.500 €
BOLIG TYPE:	Leilighet
STED:	Alicante (Alicante City Centre)
SOVEROM:	2
Bad:	2
BOAREAL (m2):	69
TOMT (m2):	-
Terrasse (m2):	4
ÅR:	
ETASJER:	-
MELDING	-



BESKRIVELSE

New Residential Development in Alicante with Open Views - only 2km to city centre and 6km to the Beach! Newly Built Homes in a Privileged Location in Alicante, designed to offer maximum comfort and quality of life. With 84, 2 and 3 bedroom homes, this complex is located in San Agustín - Pau II, a strategic area with all essential services within easy reach. This 69m2 apartment consists of 2 bedrooms, 2 bathrooms, open plan lounge/kitchen/dining area, private 4m2 terrace and parking space. The homes have been designed with a modern and efficient approach, incorporating high quality materials and sustainable technology: reinforced access door for added security, ducted air conditioning (hot and cold) installed, carpentry with thermal break and double glazing to improve thermal and acoustic insulation and domestic hot water production by means of aerothermics, guaranteeing energy efficiency

and sustainability. Residents will enjoy a modern and functional environment, with large garden areas, communal swimming pool, children's play area, parking spaces and storage rooms. In addition, its elevated location guarantees unobstructed views of the city and the surrounding natural environment. This residential complex is surrounded by a wide range of services that will make your day-to-day life easier; 9 schools and institutes in the vicinity, Supermarkets and shops, Corfu Island Shopping Centre (with shops, gyms, restaurants), Sports facilities. The excellent infrastructure of the neighbourhood guarantees comfort, security and accessibility, making it an ideal place for families and investors alike. The San Agustín neighbourhood is situated on a gentle hill, offering panoramic views of Alicante's city skyline, Mount Benacantil and the surrounding mountains. Its Mediterranean climate and proximity to green spaces and leisure areas make it an ideal place to live. The airport Alicante-Elche Airport - 14 km, the golf course 7km and the port of Alicante 5km. Alicante offers an exceptional climate, a vibrant cultural life and a first class infrastructure, making it one of the most desirable cities in Spain. This new residential development in San Agustin - Pau II combines elegant design with an unbeatable location.



STIL	UTSIKT	DISTANSE TIL :	MØBLER
<ul style="list-style-type: none">• Modern• Contemporary	<ul style="list-style-type: none">• Panorama	Strand : 6 Km Flyplass: 20 Km Sentrum : 2 Km	<ul style="list-style-type: none">• Uten møbler
PARKERING NR BILER	FLOARING	KJØKKEN	HAGE TERASSER
: 1	<ul style="list-style-type: none">• Fliser• Stein	<ul style="list-style-type: none">• Åpent kjøkken	<ul style="list-style-type: none">• Lekeplass• Opparbeidet hage• Inngjerdet• Felles hage
EXTRA			
<ul style="list-style-type: none">• Innebygde garderober• Alarm• Sikkerhets dør• Vinduer med dobbelt glass• Heis			

PROPERTY GALLERY















-  SOLARIUM
-  PISCINA
-  ZONAS VERDES / AJARDINADAS
-  ZONAS JUEGOS INFANTILES
-  PLAYA DE PISCINA



Documentación informativa en carácter consultivo y no vinculante sobre la modificación de condiciones por exigencias de este decreto, siendo responsable de la dirección facultativa o autoridad competente.

Las fotografías de las fachadas, elementos comunes y interiores espacios interiores y podrán ser objeto de verificación o modificación en su proyecto técnico.

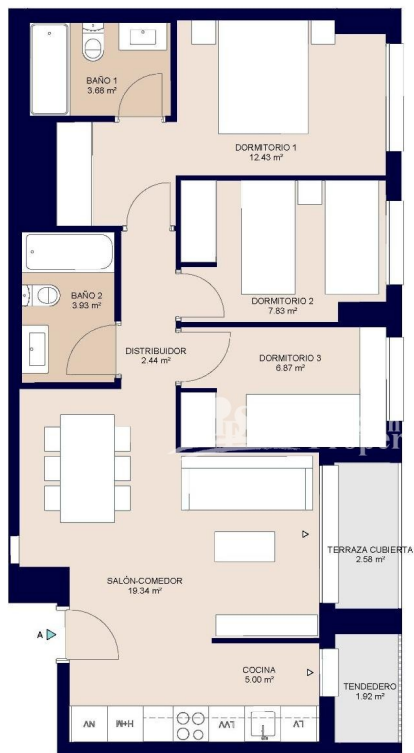
El contenido de las fotografías no está incluido. Los acabados, calidades, colores, equipamiento, espacios exteriores y muebles de exterior son una aproximación meramente representativa y el equipamiento de los interiores será el incluido en la correspondiente memoria de calidades.

La certificación energética se corresponde con la establecida en proyecto en marcha.

El contenido de planchas de detalles, dibujos en este plano no son vinculantes, pudiendo variar durante el proceso constructivo por modificaciones técnicas o ajustes de la topografía real de la parcela.

Toda la información y entrega de documentación se hará a todo cumpliendo a lo dispuesto en el Real Decreto 1110/2008 y demás normativa que le sea aplicable.

Documentación de obra de carácter consultivo y no vinculante.



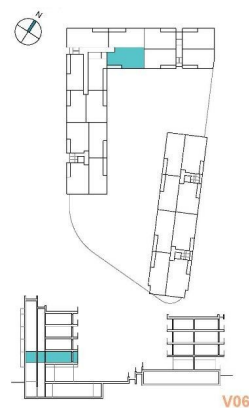
El presente plano comercial, que incluye una parte gráfica y datos relativos a las superficies, puede ser objeto de modificaciones ordenadas por los organismos públicos competentes y/o exigencias técnicas o jurídicas, siempre y cuando estén justificadas y no supongan alteraciones sustanciales. El mobiliario mostrado no está incluido y el equipamiento del inmueble será el indicado en la correspondiente memoria de calidades.



Portal 2. P01 - A



Superficies:	Vivienda 3d
Superficie útil interior	61.52m²
Superficie útil terrazas	4.50m²
Superficie construida interior	72.08m²
Superficie construida incluidas ZZCC	82.28m²









"OUR EXPERIENCE IS YOUR GUARANTEE"