



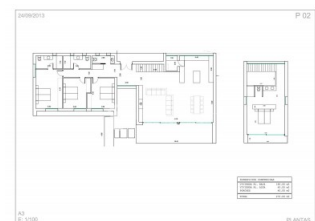
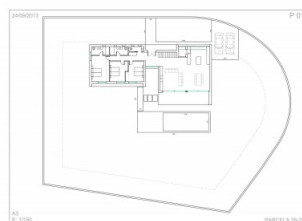
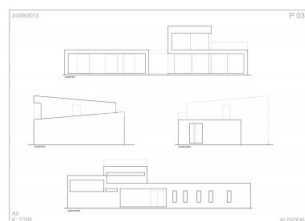
REF: # 2521

CALPE/MORAIRA (BENISSA COSTA)



#### INFO

PRIS:	1.265.000 €
BOLIG TYPE:	Villa
STED:	Calpe/Moraira (Benissa costa)
SOVEROM:	4
Bad:	3
BOAREAL ( m 2 ):	270
TOMT ( m2 ):	1.600
Terrasse ( m2 ):	-
ÅR:	
ETASJER:	2
MELDING	-



#### BESKRIVELSE

Modern and avant-garde design villa at 500 meters from the sea and sandy beach of La Fustera in Benissa coast, Spain. This luxury villa will be built on two of the very few flat plots of 1600 m2 left in that area with sea views in Benissa between Moraira and Calpe with its ecologic walk way along the sea and the yacht club and diving school nearby. The house consists of two floors. The lower floor is distributed into a hall, three bedrooms, two bathrooms, a toilet, a large living room with open kitchen, laundry room and porches. The upper floor has one more bedroom with a bathroom. The swimming pool is surrounded by a sun terrace and lovely, landscaped garden and the parking area for two cars. This fantastic villa will be built with an unique design and having all the rooms facing the sea and the garden and the use quality materials and finishing like an equipped luxury kitchen with Bosch appliances, rolling blinds in the bedrooms, aged marble floors, alarm etc. It can be personalized according to your wishes to make it your ideal dream home

in Spain.

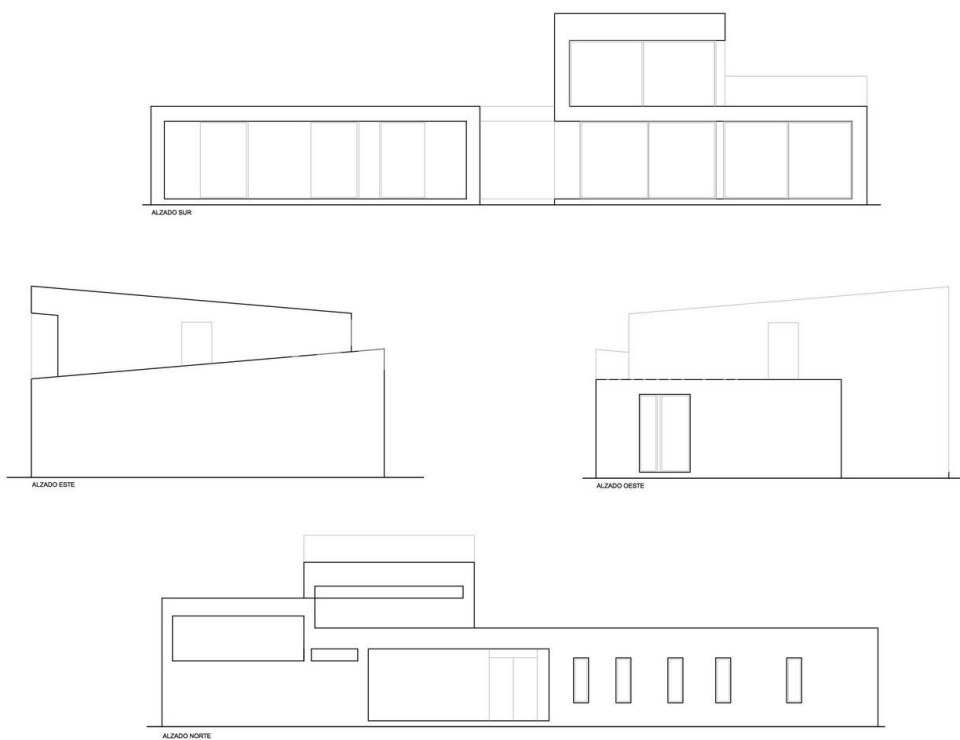


STIL	UTSIKT	DISTANSE TIL :	MØBLER
<ul style="list-style-type: none"> <li>• Modern</li> <li>• Contemporary</li> </ul>	<ul style="list-style-type: none"> <li>• Sjø utsikt</li> </ul>	Strand : 500 m <hr/> Flyplass: 50 Km <hr/> Sentrum : 1 Km	<ul style="list-style-type: none"> <li>• Uten møbler</li> </ul>
HOVED BOLIG	FLOARING	KJØKKEN	HAGE TERASSER
<ul style="list-style-type: none"> <li>• Bad on suite</li> </ul>	<ul style="list-style-type: none"> <li>• Marmor</li> </ul>	<ul style="list-style-type: none"> <li>• Åpent kjøkken</li> <li>• Hvitevarer</li> </ul>	<ul style="list-style-type: none"> <li>• Ooverbygd terrasse</li> <li>• Åpen terrasse</li> <li>• Utebelysning</li> <li>• Opparbeidet hage</li> <li>• Inngjerdet</li> <li>• Gress</li> <li>• Stein murer</li> <li>• Privat hage</li> </ul>
OPPVARMING	EXTRA		
<ul style="list-style-type: none"> <li>• Sentral gas oppvarming</li> <li>• Radiatorer</li> </ul>	<ul style="list-style-type: none"> <li>• Innebygde garderober</li> <li>• Alarm</li> <li>• Sikkerhets dør</li> <li>• Vinduer med dobbelt glass</li> <li>• Dørklokke med kamera</li> <li>• Lager rom</li> <li>• Vaske rom</li> </ul>		



24/09/2013

P 03

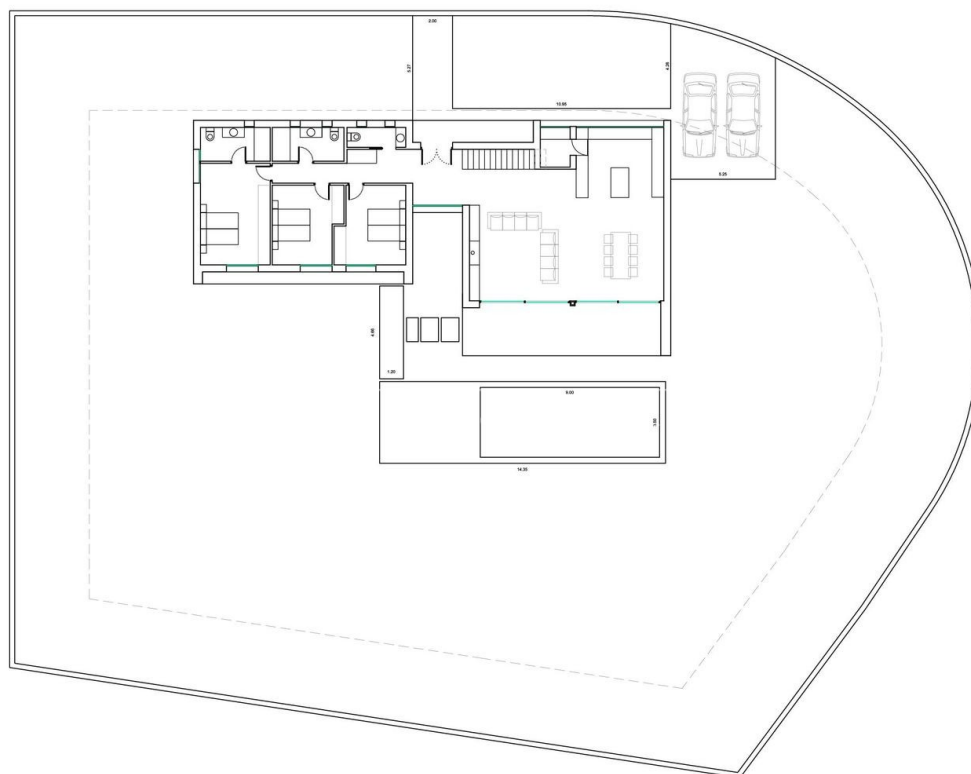


A3  
E: 1/100

ALZADOS

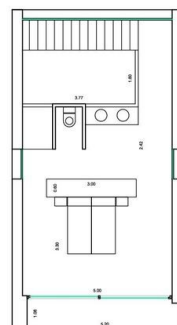
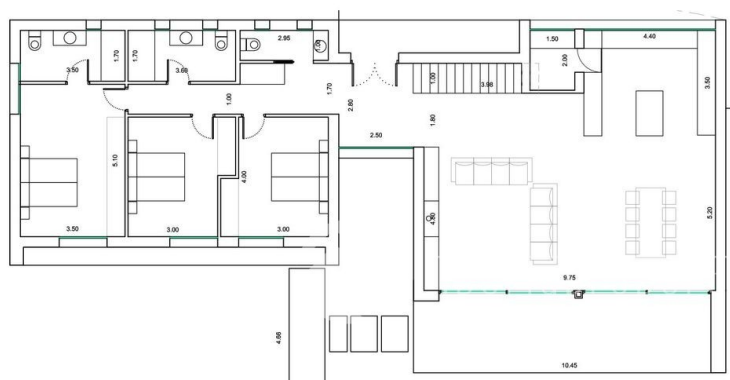
24/09/2013

P 01



A3  
E: 1/150

PARCELA 28-29



SUPERFICIES CONSTRUIDAS	
VIVIENDA PL. BAJA	185.00 m2
VIVIENDA PL. ALTA	45.00 m2
PORCHES	40.00 m2
<b>TOTAL</b>	<b>270.00 m2</b>

A3  
E: 1/100

PLANTAS

**"OUR EXPERIENCE IS YOUR GUARANTEE"**