



REF: # 2955

CALPE/MORAIRA (BENISSA COSTA)



INFO

PRIS:	475.000 €
BOLIG TYPE:	Villa
STED:	Calpe/Moraira (Benissa costa)
SOVEROM:	3
Bad:	2
BOAREAL (m 2):	160
TOMT (m2):	763
Terrasse (m2):	-
ÅR:	
ETASJER:	2
MELDING	-



BESKRIVELSE

In the green surrounding of Benissa, this exclusive project of only 6 villas will be built, nearby the beach, sailing school, shops and restaurants along the beautiful Mediterranean coast. This modern villa with sea views has been designed as a holiday home (see floor plan) and is surrounded by sunny terraces and has a private pool of 2,5 by 12 meters over the total width of the terrace. The living room, dining area and kitchen are one open space of 55 m2 which even seems bigger because of the high sliding doors and windows. On this floor are two guest bedrooms with shared bathroom and extra toilet. On the first floor is the master bedroom with walk in wardrobe and bathroom en-suite with bathtub and walk-in shower. It has a spectacular lounge terrace of 63 m2 with sea views to enjoy the sunset at the end of the day. From here it is only a 10 minutes drive to the long and sandy beaches of Calpe and the beach town of Moraira. In autumn 2014 the project developer will start the construction which will take one year. This company has a well-known reputation and has built other modern villas along the Costa Blanca and we will be

showing you the show villa once you are here. An unique opportunity to buy a modern villa in Spain, on a central location nearby the beach against a very competitive price.

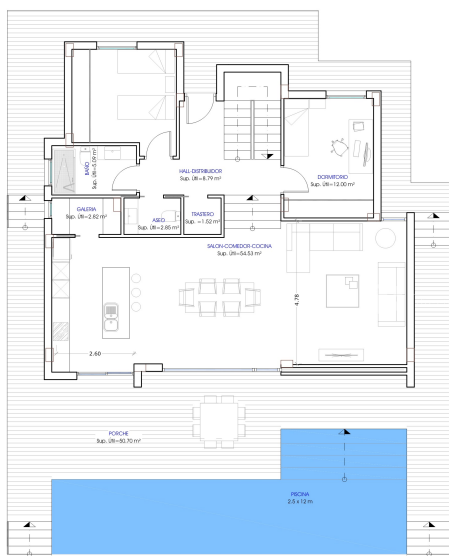


STIL	UTSIKT	AIRCONDITION	DISTANSE TIL :
<ul style="list-style-type: none">• Modern	<ul style="list-style-type: none">• Sjø utsikt• Fjell utsikt	<ul style="list-style-type: none">• Sentral aircondition	Strand : 1 Km Sentrum : 3 Km
MØBLER	PARKERING NR BILER	HOVED BOLIG	FLOORING
<ul style="list-style-type: none">• Uten møbler	Garasje nr biler : 1	<ul style="list-style-type: none">• Bad on suite	<ul style="list-style-type: none">• Fliser
KJØKKEN	HAGE TERASSER	OPPVARMING	EXTRA
<ul style="list-style-type: none">• Åpent kjøkken• Hvitevarer	<ul style="list-style-type: none">• Ooverbygd terrasse• Åpen terrasse• Opparbeidet hage• Stein murer• Privat hage	<ul style="list-style-type: none">• Sentral gas oppvarming	<ul style="list-style-type: none">• Innebygde garderober• Sikkerhets dør• Vinduer med dobbelt glass• Lager rom• Vaske rom

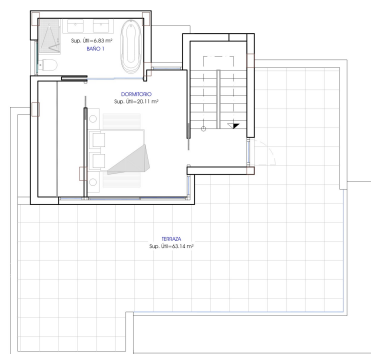








Planta baja



Planta primera

MODELO BENISA 4
Sup. construida= 159,51 m2

OPCION 1









"OUR EXPERIENCE IS YOUR GUARANTEE"