



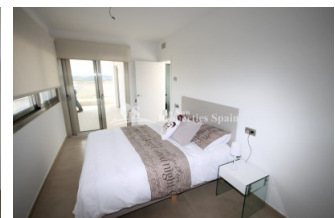
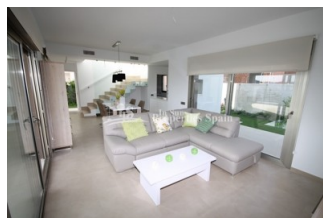
REF: # 3939

ORIHUELA COSTA (VISTABELLA GOLF COURSE)



INFO

PRIS:	209.900 €
BOLIG TYPE:	Villa
STED:	Orihuela Costa (Vistabella Golf Course)
SOVEROM:	3
Bad:	2
BOAREAL (m2):	150
TOMT (m2):	250
Terrasse (m2):	26
ÅR:	
ETASJER:	-
MELDING	-



BESKRIVELSE

NEW build modern design luxury south/west facing 3 bedroom, 2 bathroom Detached Villa "BALI - A" Contemporary style is located in "VISTABELLA GOLF RESORT " between Orihuela Costa and Orihuela Town which is considered one of the best courses in the Costa Blanca South and only 10 minutes away from the lovely beaches of ORIHUELA COSTA. The complex is formed by 9 detached villas and 12 semi detached villas with 1 bedrooms and 1 bathrooms, open living /dining area with American style kitchen on the ground floor, 2 bedroom with built-in wardrobes, 1 bathroom and balconys on the first floor ,south/ west facing with an independent plot from 215m2 to 250m2 with option to build one private 3x5m2 pool, spacious garden and private parking space. Close to Clubhouse, restaurants, bars and supermarket.

ENERGETIC CERTIFIED



STIL <ul style="list-style-type: none">• Modern• Contemporary	UTSIKT <ul style="list-style-type: none">• Panorama• Fjell utsikt	AIRCONDITION <ul style="list-style-type: none">• Sentral aircondition	DISTANSE TIL : <div>Strand : 8 Km</div> <div>Flyplass: 40 Km</div> <div>Sentrum : 500 m</div>
ORIENTERING <div>South west</div>	MØBLER <ul style="list-style-type: none">• Uten møbler	PARKERING NR BILER <div>: 1</div>	HOVED BOLIG <ul style="list-style-type: none">• Bad on suite
FLOARING <ul style="list-style-type: none">• Fliser	KJØKKEN <ul style="list-style-type: none">• Åpent kjøkken• Hvitevarer• Granit benkeplate	HAGE TERASSER <ul style="list-style-type: none">• Ooverbygd terrasse• Åpen terrasse• Inngjerdet• Stein murer• Privat hage	EXTRA <ul style="list-style-type: none">• Innebygde garderober• Sikkerhets dør• Vinduer med dobbelt glass• Lager rom







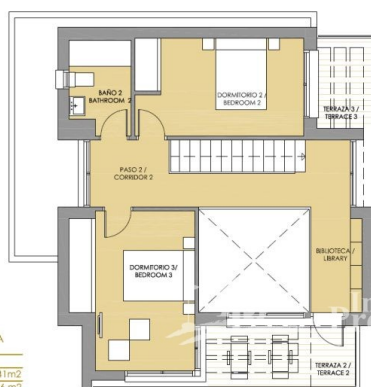












TOP FLOOR

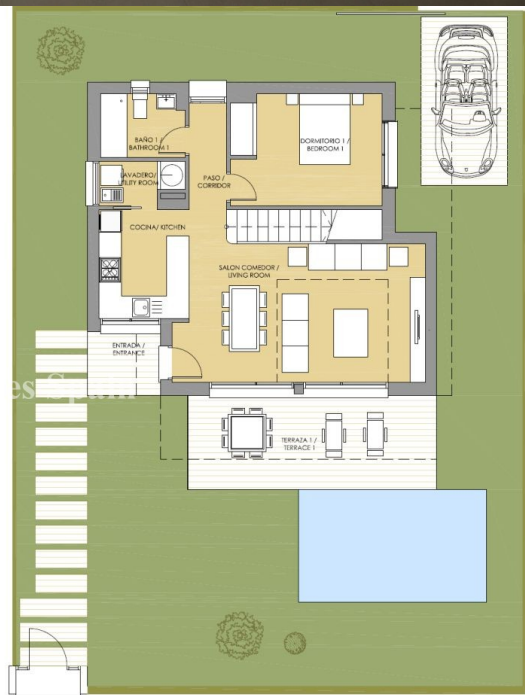
MODEL A

SUPERFICIES ÚTILES / OCCUPIABLE AREA

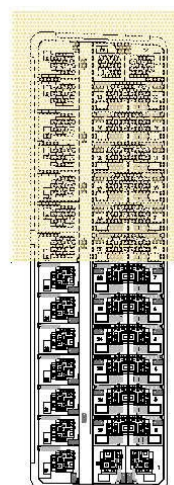
ENTRADA / ENTRANCE	3.41 m ²
SALON-COCINA / LIVING ROOM-KITCHEN	32.16 m ²
LAVADERO / UTILITY ROOM	2.42 m ²
ESCALERAS / STAIRS	3.78 m ²
DORMITORIO 1 / BEDROOM 1	11.90 m ²
BAÑO 1 / BATHROOM 1	3.88 m ²
PASO 1 / CORRIDOR 1	2.56 m ²
DORMITORIO 2 / BEDROOM 2	11.63 m ²
BAÑO 2 / BATHROOM 2	3.89 m ²
DORMITORIO 3 / BEDROOM 3	13.01 m ²
PASO 2 / CORRIDOR 2	9.24 m ²
BIBLIOTECA / LIBRARY	3.69 m ²
TERRAZA 1 / TERRACE 1	16.61 m ²
TERRAZA 2 / TERRACE 2	6.37 m ²
TERRAZA 3 / TERRACE 3	3.52 m ²

SUPERFICIE CONSTRUIDA / BUILT AREA

SUP. CONSTRUIDA / BUILT AREA	123.53 m ²
BUILT AREA + TERRACES	150.03 m ²
PARCELA / TOTAL PLOT	250.00 m ²



GROUND FLOOR





"OUR EXPERIENCE IS YOUR GUARANTEE"