



REF: # 4287

ORIHUELA COSTA (SAN JAVIER)



#### INFO

PRIS:	325.000 €
BOLIG TYPE:	Villa
STED:	Orihuela Costa (San Javier)
SOVEROM:	3
Bad:	3
BOAREAL ( m2 ):	134
TOMT ( m2 ):	331
Terrasse ( m2 ):	43
ÅR:	-
ETASJER:	-
MELDING	315.000 €

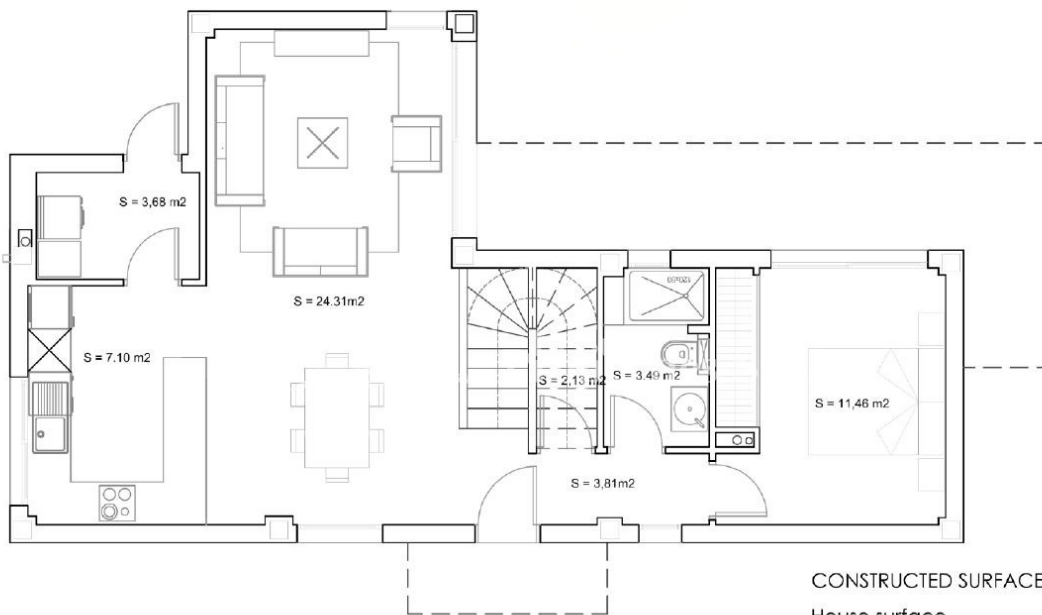
#### BESKRIVELSE

KEY READY VILLA located in SANTIAGO DE LA RIBERA (Murcia) 10 minutes walk from the BEACH. A luxury detached villa close to the sea including a plot of 315m2, 3 bedrooms, 3 bathrooms (2 ensuite), with a very nice private swimming pool of 3x6 and a completely finished garden and includes white goods. The two-storey Villa boasts 3 bedrooms, 3 bathrooms, modern kitchen and mezzanine level on the first floor overlooking the open-plan lounge/dining room which is fitted with floor-to-ceiling windows allowing the natural light to flood through and leading to a private garden and pool. The property includes off-road parking for two cars. The development is just a 10-minute walk from the beach, with local bus/train links only ten minutes from the properties. RMU Corvera International Airport is a 30 minute drive and Alicante Airport only 45 minutes via the AP-7 highway and N332 coast road.

#### ENERGETIC CERTIFIED

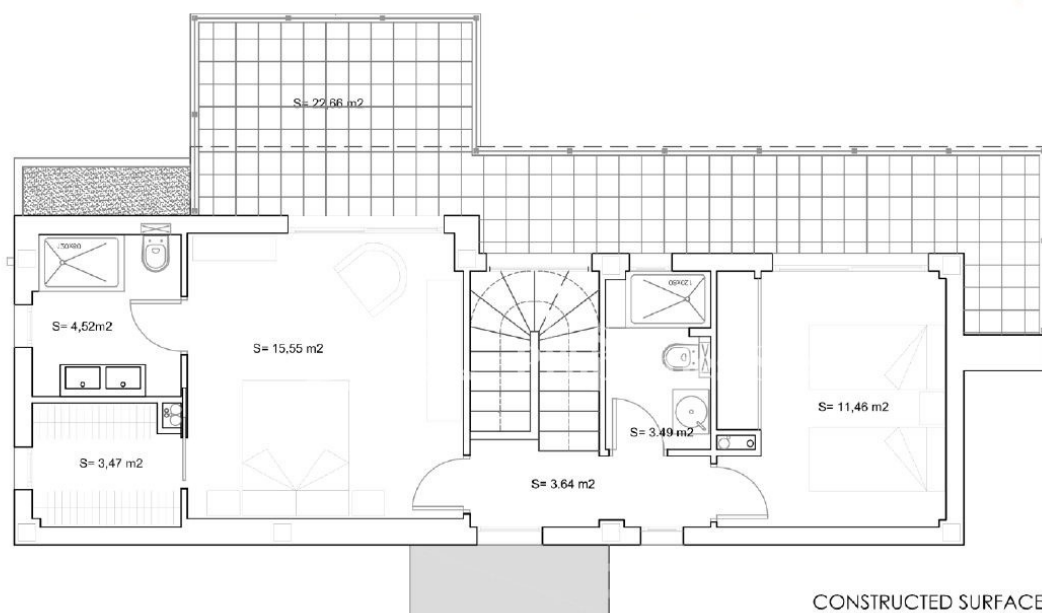


<b>STIL</b> <ul style="list-style-type: none"><li>Contemporary</li></ul>	<b>UTSIKT</b> <ul style="list-style-type: none"><li>Panorama</li></ul>	<b>AIRCONDITION</b> <ul style="list-style-type: none"><li>Sentral aircondition</li></ul>	<b>DISTANSE TIL :</b> <div>Strand : 500 m</div> <div>Flyplass: 10 Km</div> <div>Sentrum : 500 m</div>
<b>ORIENTERING</b> <div>South west</div>	<b>MØBLER</b> <ul style="list-style-type: none"><li>Uten møbler</li></ul>	<b>PARKERING NR BILER</b> <div>: 1</div>	<b>HOVED BOLIG</b> <ul style="list-style-type: none"><li>Bad on suite</li></ul>
<b>FLOARING</b> <ul style="list-style-type: none"><li>Fliser</li><li>Stein</li></ul>	<b>KJØKKEN</b> <ul style="list-style-type: none"><li>Åpent kjøkken</li><li>Hvitevarer</li><li>Granit benkeplate</li></ul>	<b>HAGE TERASSER</b> <ul style="list-style-type: none"><li>Ooverbygd terrasse</li><li>Åpen terrasse</li><li>Utebelysning</li><li>Automatisk vanningsystem</li><li>Palme trær</li><li>Opparbeidet hage</li><li>Inngjerdet</li><li>Stein murer</li><li>Privat hage</li></ul>	<b>EXTRA</b> <ul style="list-style-type: none"><li>Innebygde garderober</li><li>Vinduer med dobbelt glass</li><li>Lager rom</li></ul>



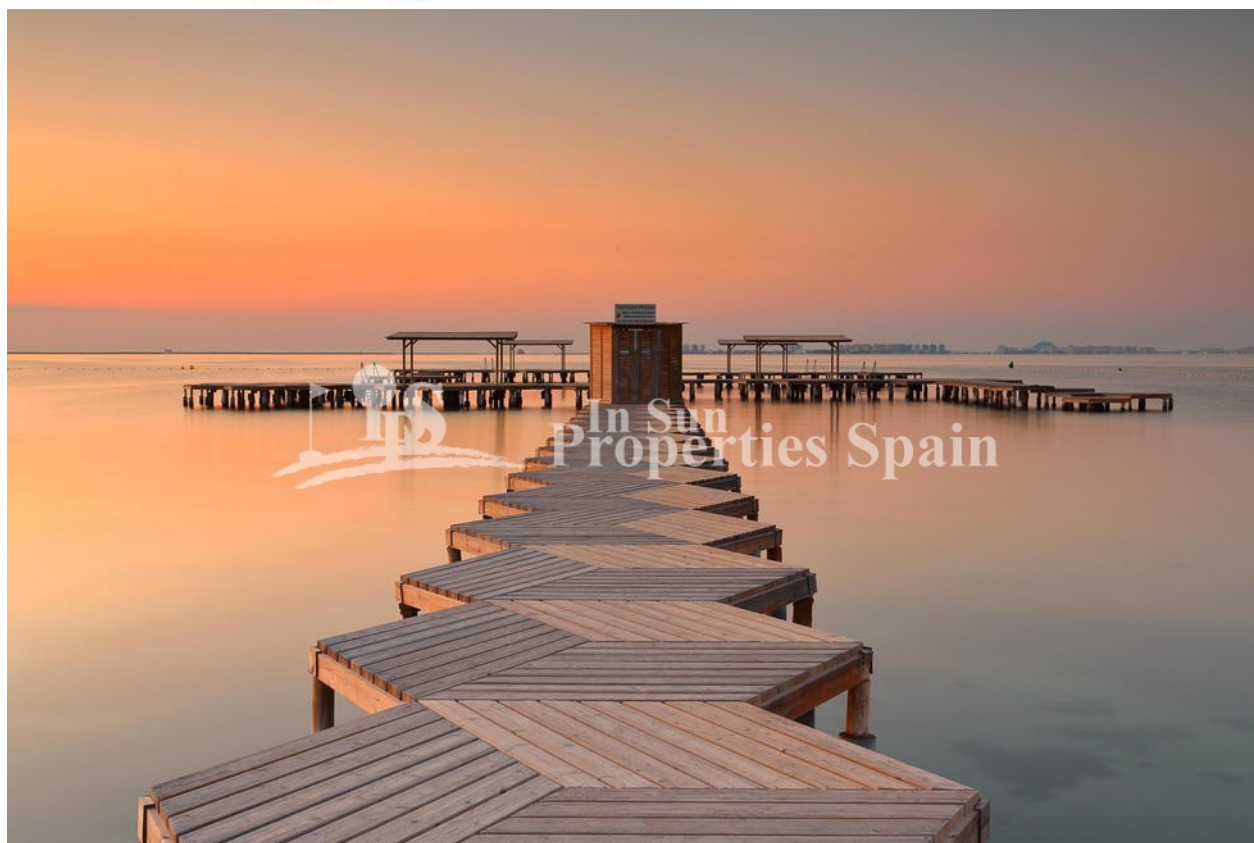
CONSTRUCTED SURFACES

House surface	143,85 m <sup>2</sup>
Ground floor surf.	79,32 m <sup>2</sup>
First floor surf.	64,53 m <sup>2</sup>
Downstair terrace surf.	20,46 m <sup>2</sup>
Upstair terrace surf.	22,66 m <sup>2</sup>



#### CONSTRUCTED SURFACES

House surface	143,85 m <sup>2</sup>
Ground floor surf.	79,32 m <sup>2</sup>
First floor surf.	64,53 m <sup>2</sup>
Downstair terrace surf.	20,46 m <sup>2</sup>
Upstair terrace surf.	22,66 m <sup>2</sup>









***"OUR EXPERIENCE IS YOUR GUARANTEE"***