



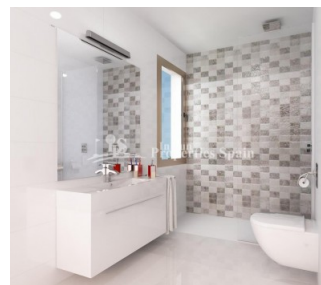
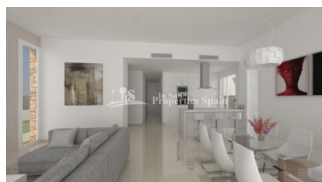
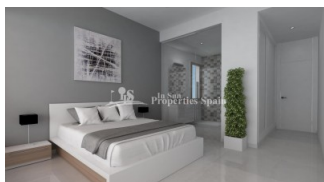
REF: # 4289

TORREVIEJA (LA SIESTA - SAN LUIS)



#### INFO

|                  |                                   |
|------------------|-----------------------------------|
| PRIS:            | 358.000 €                         |
| BOLIG TYPE:      | Villa                             |
| STED:            | Torrevieja (La Siesta - San Luis) |
| SOVEROM:         | 3                                 |
| Bad:             | 2                                 |
| BOAREAL ( m2 ):  | 177                               |
| TOMT ( m2 ):     | 400                               |
| Terrasse ( m2 ): | -                                 |
| ÅR:              |                                   |
| ETASJER:         | -                                 |
| MELDING          | -                                 |



#### BESKRIVELSE

A new project comprising of 4 Luxury Villas with modern design and large south facing plots on 400m2 each located in La Siesta - Torrevieja . The villas are distributed on one floor only and comprises of 3 bedrooms, 2 bathrooms (1 bathroom is en-suite), spacious living room, modern open plan kitchen and a laundry room. From the living room there is direct access through big sliding doors to the terrace and to the private pool which is optional and that measures 3,5 x 7 meters. The villas will be finished to the highest standards, and are delivered with integrated wardrobes in the bedrooms, marble worktop (Silestone) in the kitchen, heated floors in the bathrooms, electric blinds, pre-installation of central air condition and home automation center and off-road parking. As an extra you can also have a large roof top solarium with nice views and sun all day . Walking distance to shops and restaurants. La Siesta is located just a few minutes from the best beaches of Torrevieja the Habaneras Shopping Center and close to 4 of the best golf courses in the area. Only

20 min. drive from San Javier airport and 40 min. to Alicante airport. Pool  
3,5x7 = 12.000€ Solarium - Roof Terrace = 12.000€



|  |   |  |   |
|--|---|--|---|
| <b>STIL</b> <ul style="list-style-type: none"> <li>• Modern</li> <li>• Contemporary</li> </ul>                             | <b>UTSIKT</b> <ul style="list-style-type: none"> <li>• Panorama</li> </ul>  | <b>AIRCONDITION</b> <ul style="list-style-type: none"> <li>• Sentral aircondition</li> </ul>   | <b>DISTANSE TIL :</b> <div>Strand : 4 Km</div> <div>Flyplass: 40 Km</div> <div>Sentrum : 1 Km</div>     |
| <b>ORIENTERING</b> <div>South west</div>   | <b>MØBLER</b> <ul style="list-style-type: none"> <li>• Uten møbler</li> </ul>   | <b>PARKERING NR BILER</b> <div>: 1</div>   | <b>HOVED BOLIG</b> <ul style="list-style-type: none"> <li>• Lagerrom</li> <li>• Bad on suite</li> </ul> |
| <b>FLOARING</b> <ul style="list-style-type: none"> <li>• Fliser</li> <li>• Stein</li> </ul>                                | <b>KJØKKEN</b> <ul style="list-style-type: none"> <li>• Åpent kjøkken</li> <li>• Hvitevarer</li> <li>• Granit benkeplate</li> </ul> | <b>HAGE TERASSER</b> <ul style="list-style-type: none"> <li>• Ooverbygd terrasse</li> <li>• Åpen terrasse</li> <li>• Automatisk vanningsystem</li> <li>• Opparbeidet hage</li> <li>• Inngjerdet</li> <li>• Stein murer</li> <li>• Privat hage</li> </ul> | <b>OPPVARMING</b> <ul style="list-style-type: none"> <li>• Gulv varme bad</li> </ul>                    |
| <b>EXTRA</b> <ul style="list-style-type: none"> <li>• Innebygde garderober</li> <li>• Vinduer med dobbelt glass</li> </ul> |   |  |   |



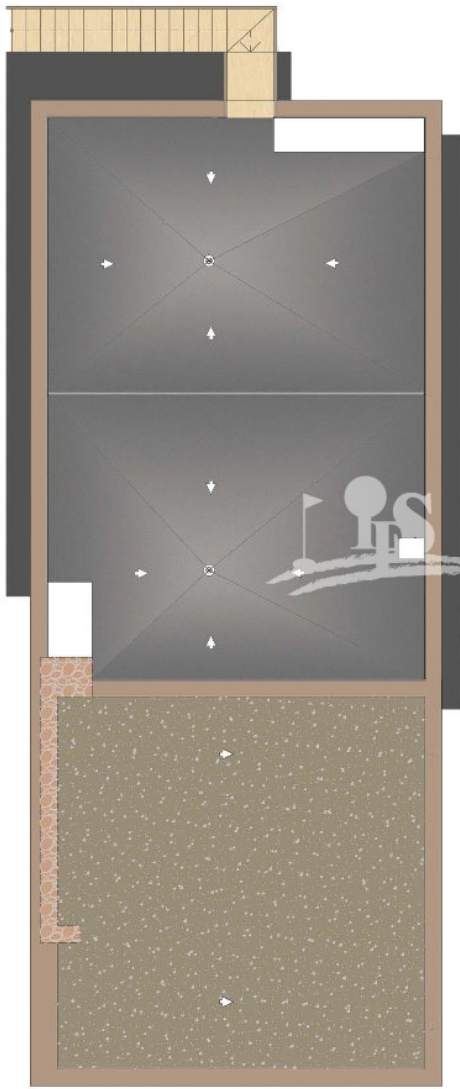




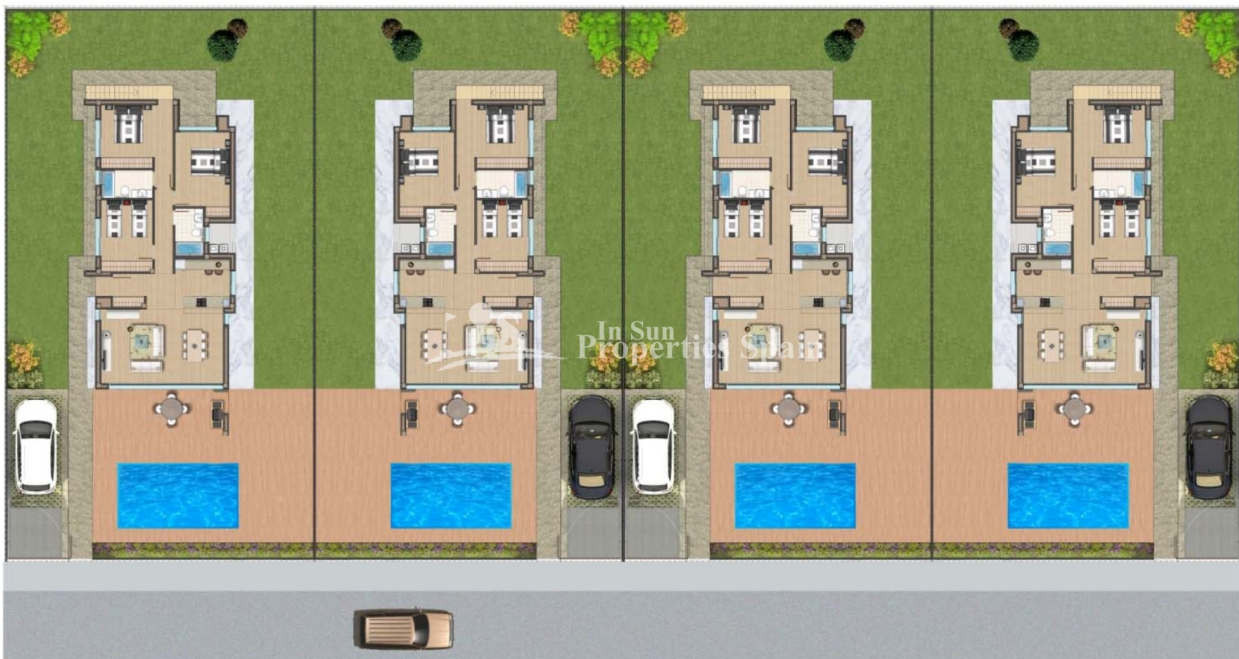


| CUADRO DE SUPERFICIES            |                  |
|----------------------------------|------------------|
| DENOMINACION.                    | SUPERFICIE.      |
| HALL                             | 4.96             |
| ESTAR-COMEDOR-COCINA             | 34.37            |
| GALERÍA (50%)                    | 0.37             |
| DORMITORIO 1                     | 13.76            |
| DORMITORIO 2                     | 12.29            |
| DORMITORIO 3                     | 10.40            |
| BAÑO 1                           | 4.05             |
| BAÑO 2                           | 3.90             |
| PASILLO                          | 4.38             |
| PORCHE (50%)                     | 8.79             |
| <b>TOTAL SUP. UTIL VIVIENDA</b>  | <b>97.27 m2</b>  |
| <b>TOTAL SUP. CONS. VIVIENDA</b> | <b>115.27 m2</b> |

SUPEFICIE TOTAL: 177 m²



SUPEFICIE TOTAL: 177 m<sup>2</sup>







In Sun  
Properties Spain



In Sun  
Properties Spain



 In Sun  
Properties Spain



In Sun  
Properties Spain

**"OUR EXPERIENCE IS YOUR GUARANTEE"**