



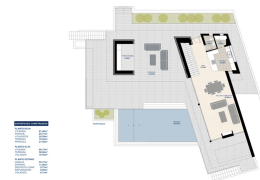
REF: # 4576

JAVEA



#### INFO

PRIS:	895.000 €
BOLIG TYPE:	Villa
STED:	Javea
SOVEROM:	3
Bad:	2
BOAREAL ( m2 ):	305
TOMT ( m2 ):	1.000
Terrasse ( m2 ):	-
ÅR:	-
ETASJER:	-
MELDING	-



#### BESKRIVELSE

Modern design villa, currently under construction, in a prime position with sea views. On the main floor; entry, open plan living / dining / kitchen, utility room, guest toilet and spacious covered terrace. Internal stairs lead to the upper floor comprising; master bedroom with en-suite bathroom and walk-in closet, 2 more double bedrooms, family bathroom and large open terrace. In the basement a double garage and store room.

#### ENERGETIC CERTIFIED



UTSIKT

- Panorama
- Sjø utsikt

PARKERING NR BILER

Garasje nr biler : 1







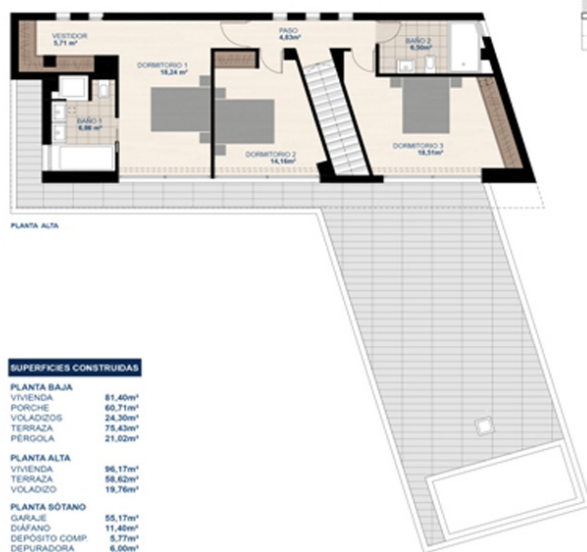


#### SUPERFICIES CONSTRUIDAS

PLANTA BAJA	
VIVIENDA	81.40m²
PORCHE	60.71m²
VOLADIZOS	24.50m²
TERRAZA	75.43m²
PERGOLA	21.02m²

PLANTA ALTA	
VIVIENDA	96.17m²
TERRAZA	58.62m²
VOLADIZO	19.76m²

PLANTA SÓTANO	
GARAJE	55.17m²
DIÁFANO	11.40m²
DEPÓSITO COMP.	5.77m²
DEPURADORA	6.50m²
VOLADIZO	9.11m²

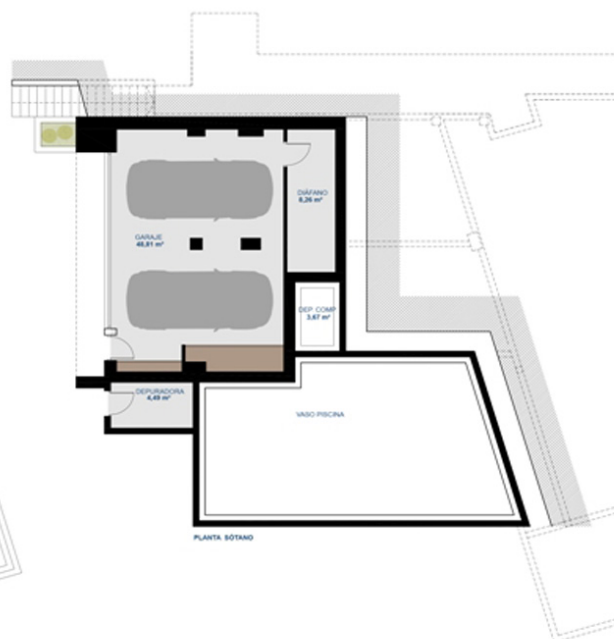


#### SUPERFICIES CONSTRUIDAS

PLANTA BAJA	
VIVIENDA	81.40m²
PORCHE	60.71m²
VOLADIZOS	24.50m²
TERRAZA	75.43m²
PERGOLA	21.02m²

PLANTA ALTA	
VIVIENDA	96.17m²
TERRAZA	58.62m²
VOLADIZO	19.76m²

PLANTA SÓTANO	
GARAJE	55.17m²
DIÁFANO	11.40m²
DEPÓSITO COMP.	5.77m²
DEPURADORA	6.50m²
VOLADIZO	9.11m²

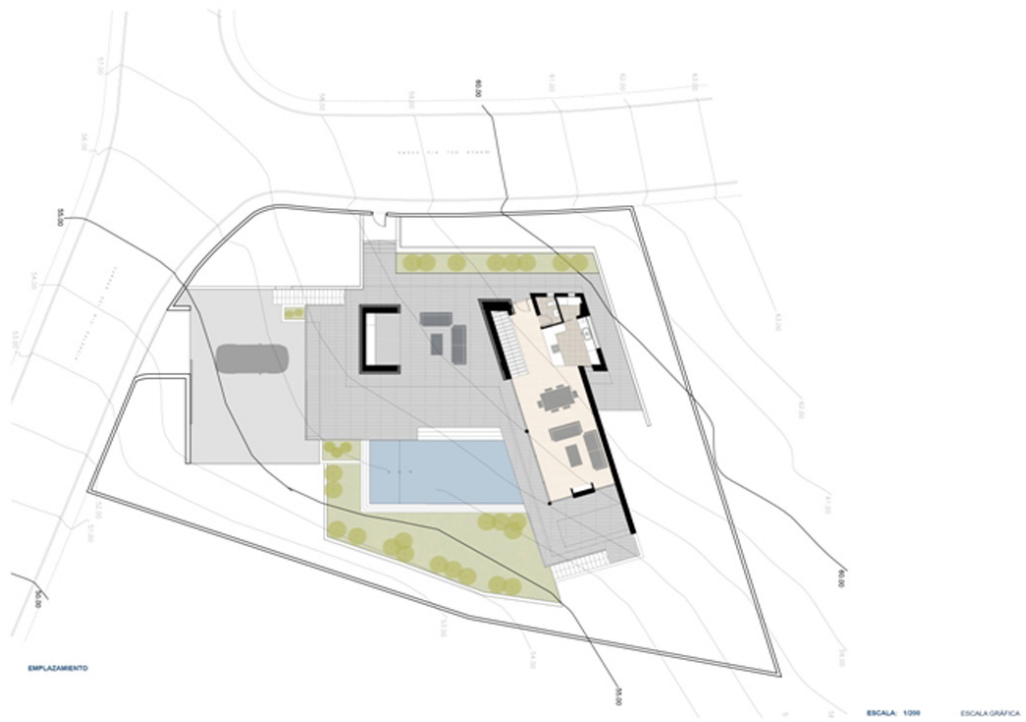


**SUPERFICIES CONSTRUIDAS**

PLANTA BAJA	
VIVIENDA	81.40m <sup>2</sup>
PORCHE	60.71m <sup>2</sup>
VOLADIZOS	24.50m <sup>2</sup>
TERRAZA	75.43m <sup>2</sup>
PERGOLA	21.02m <sup>2</sup>

PLANTA ALTA	
VIVIENDA	96.17m <sup>2</sup>
TERRAZA	58.62m <sup>2</sup>
VOLADIZO	19.76m <sup>2</sup>

PLANTA SÓTANO	
GARAJE	55.17m <sup>2</sup>
DIÁFANO	11.40m <sup>2</sup>
DEPÓSITO COMP.	5.77m <sup>2</sup>
DEFURADORA	6.50m <sup>2</sup>
VOLADIZO	9.11m <sup>2</sup>



**"OUR EXPERIENCE IS YOUR GUARANTEE"**