



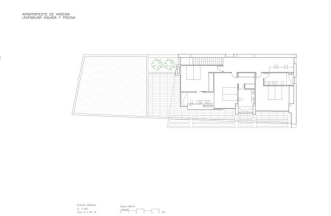
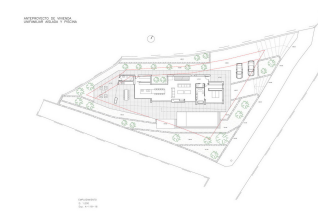
REF: # 4611

CALPE/MORAIRA



INFO

PRIS:	1.690.000 €
BOLIG TYPE:	Villa
STED:	Calpe/Moraira
SOVEROM:	4
Bad:	6
BOAREAL (m2):	550
TOMT (m2):	1.250
Terrasse (m2):	-
ÅR:	-
ETASJER:	-
MELDING	-



BESKRIVELSE

Project - This luxury modern villa will be built a flat plot in one of the best locations in Moraira, offering unbeatable 180 degrees panoramic sea views! Finished to the highest qualities and equipped with the latest technology. Turn key, including pool, terracing, natural dry stone walls, garden walls, landscaped garden, driveway, automatic gates etc. Please contact us for more details.

ENERGETIC CERTIFIED



UTSIKT

- Panorama
- Sjø utsikt

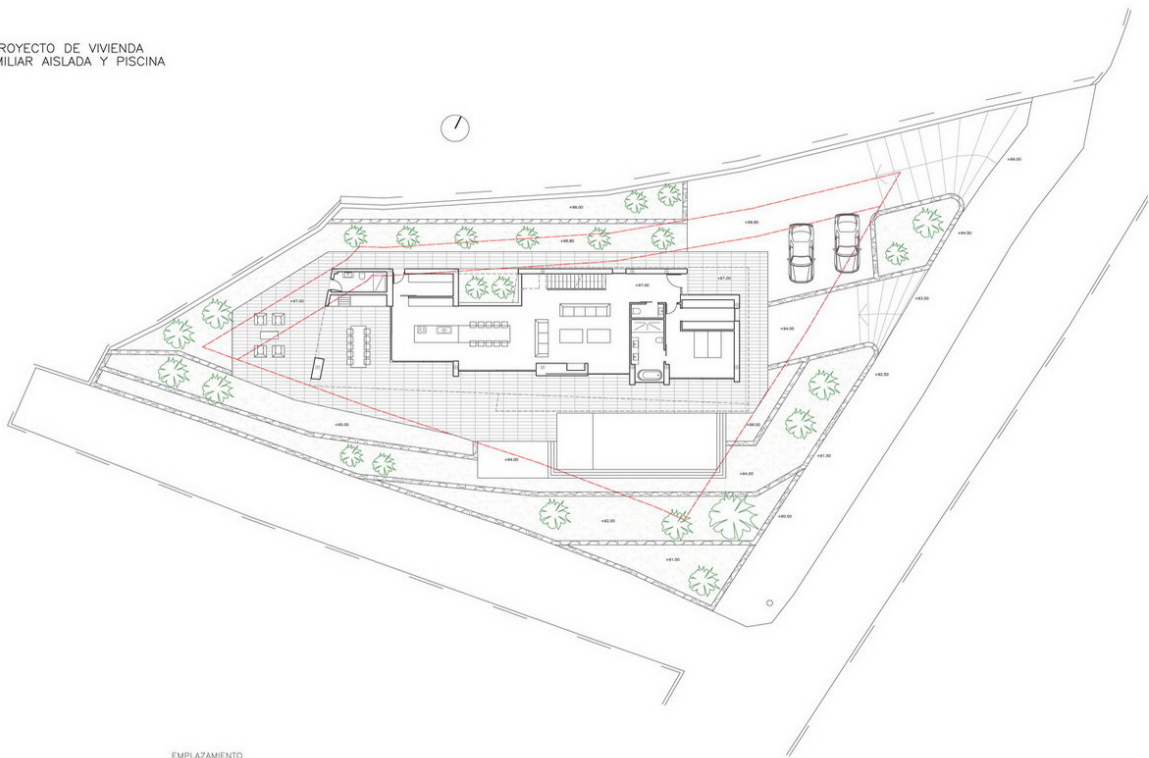
PARKERING NR BILER

Garasje nr biler : 1



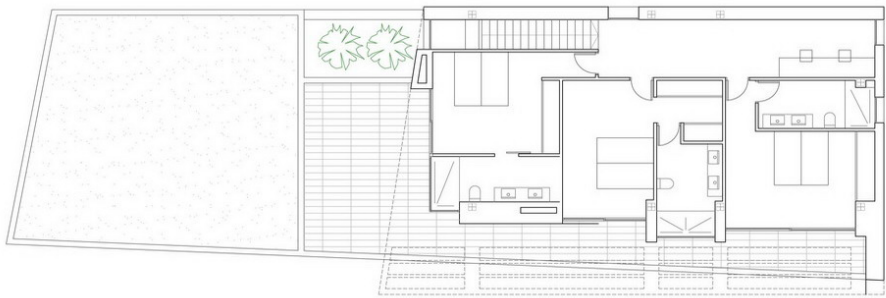


ANTEPROYECTO DE VIVIENDA
UNIFAMILIAR AISLADA Y PISCINA



EMPLAZAMIENTO
E: 1:200
Exp. A-118-16

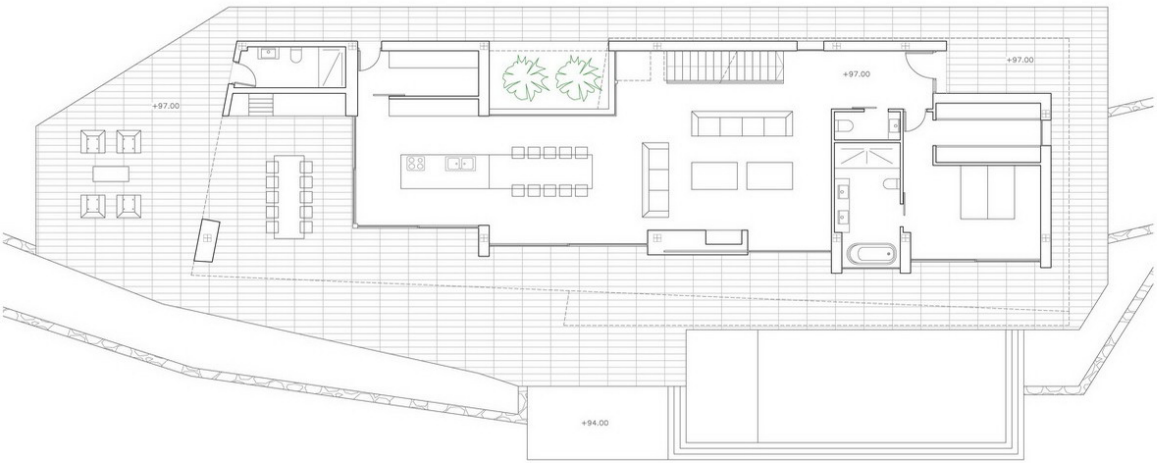
ANTEPROYECTO DE VIVIENDA
UNIFAMILIAR AISLADA Y PISCINA



PLANTA SÓTANO
E: 1:100
Exp. A-118-16



ANTEPROYECTO DE VIVIENDA
UNIFAMILIAR AISLADA Y PISCINA

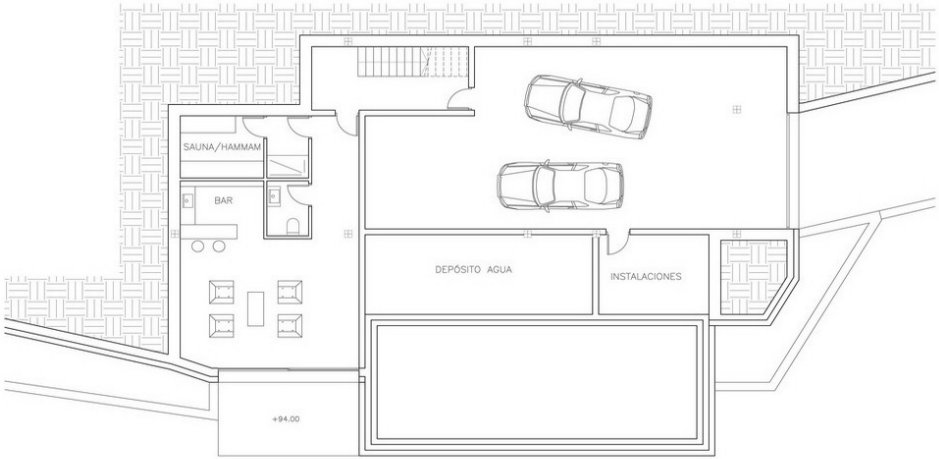


PLANTA SÓTANO
E: 1:100
Exp. A-118-16



SUPERFICIES	CONSTRUIDAS	COMPUTABLES
PLANTA ALTA		
VIVIENDA	119.49 m ²	119.49 m ²
PORCHE	17.07 m ²	8.53 m ²
PERGOLA	27.68 m ²	
TERRAZAS	98.60 m ²	
PLANTA BAJA		
VIVIENDA	156.86 m ²	156.86 m ²
BARBACOA-ASEO EXTERIOR	10.28 m ²	10.28 m ²
PORCHES	60.96 m ²	32.96 m ²
VOLADIZO	3.70 m ²	
TERRAZAS	132.24 m ²	
PISCINA	53.54 m ²	
PLANTA SÓTANO		
SALA POLIVALENTE	64.00 m ²	
ESCALERA	15.42 m ²	
TRASTERO	15.38 m ²	26.79 m ²
COCHERA	74.32 m ²	
DEPÓSITO AGUA	23.59 m ²	
SALA INSTALACIONES	11.13 m ²	
TOTAL	889.58 m ²	354.93 m ²

PLANTA SÓTANO
E: 1:100
Exp. A-118-16



"OUR EXPERIENCE IS YOUR GUARANTEE"