



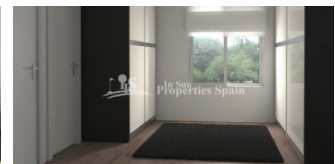
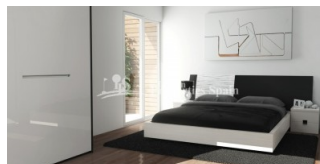
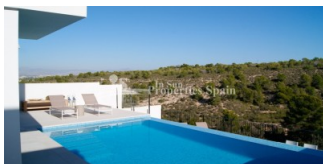
REF: # 5896

ALICANTE



#### INFO

PRIS:	336.000 €
BOLIG TYPE:	Villa
STED:	Alicante
SOVEROM:	3
Bad:	2
BOAREAL ( m2 ):	153
TOMT ( m2 ):	348
Terrasse ( m2 ):	-
ÅR:	
ETASJER:	-
MELDING	-



#### BESKRIVELSE

Moma is a design of new DETACHED VILLAS located in GRAN ALACANT with 15 month delivery. They are LUXURY homes with a cube design with a surface of 153m2 and boasts 3 bedrooms and 2 bathrooms distributed over 2 floors. Plots from 348m2 are available. It has a wonderful terrace from which you can enjoy the SEA BREEZE on those hot summer days. Nearby are the fine SANDY BEACHES like El Carabassí Beach that combine sand dunes and pine groves with the possibility to do nautical sports in authorized spaces. It also has a large maritime promenade in Arenales del Sol, which becomes populated with walkers, cyclists and runners. There are endless services in the area such as: Shopping centers, sports centers, schools, medical services, pharmacies, banking entities, administrative offices, library, church, parks, etc. 5 minutes from the beach, 10 minutes to the Airport and 15 minutes to the centres of Alicante City and Elche

#### ENERGETIC CERTIFIED



<b>STIL</b> <ul style="list-style-type: none"><li>• Modern</li><li>• Contemporary</li></ul>	<b>UTSIKT</b> <ul style="list-style-type: none"><li>• Panorama</li></ul>	<b>DISTANSE TIL :</b> <div>Strand : 1 Km</div> <div>Flyplass: 10 Km</div> <div>Sentrum : 1 Km</div>	<b>ORIENTERING</b> <div>South East West</div>
<b>MØBLER</b> <ul style="list-style-type: none"><li>• Uten møbler</li></ul>	<b>PARKERING NR BILER</b> <div>: 1</div>	<b>FLOARING</b> <ul style="list-style-type: none"><li>• Fliser</li><li>• Stein</li></ul>	<b>KJØKKEN</b> <ul style="list-style-type: none"><li>• Åpent kjøkken</li><li>• Hvitevarer</li></ul>
<b>HAGE TERASSER</b> <ul style="list-style-type: none"><li>• Ooverbygd terrasse</li><li>• Åpen terrasse</li><li>• Opparbeidet hage</li><li>• Privat hage</li></ul>	<b>EXTRA</b> <ul style="list-style-type: none"><li>• Innebygde garderober</li><li>• Sikkerhets dør</li><li>• Vinduer med dobbelt glass</li></ul>		







# MoMA

## PLANTA BAJA

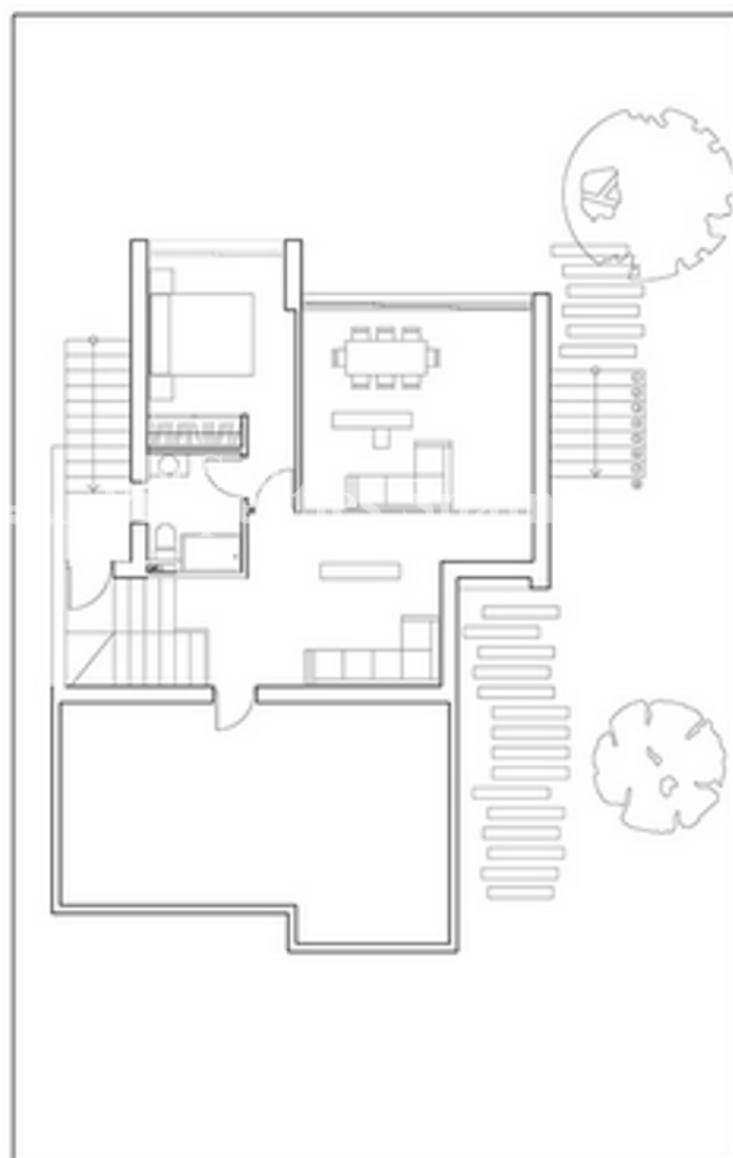
Comedor	30,59 m <sup>2</sup>
Cocina	13,11 m <sup>2</sup>
Dormitorio 1	10,95 m <sup>2</sup>
Dormitorio 2	9,88 m <sup>2</sup>
Baño 1	3,87 m <sup>2</sup>
Pasillo	1,20 m <sup>2</sup>

## PLANTA PRIMERA

Dormitorio 3	10,95 m <sup>2</sup>
Baño 2	3,20 m <sup>2</sup>
Estar	14,09 m <sup>2</sup>
Escalera	4,36 m <sup>2</sup>
Terraza	31,62 m <sup>2</sup>

**SUPERFICIE ÚTIL: 127,91 m<sup>2</sup>**

**SUPERFICIE CONSTRUIDA: 128,34 m<sup>2</sup>**



## PLANTA PRIMERA



# MoMA

## PLANTA BAJA

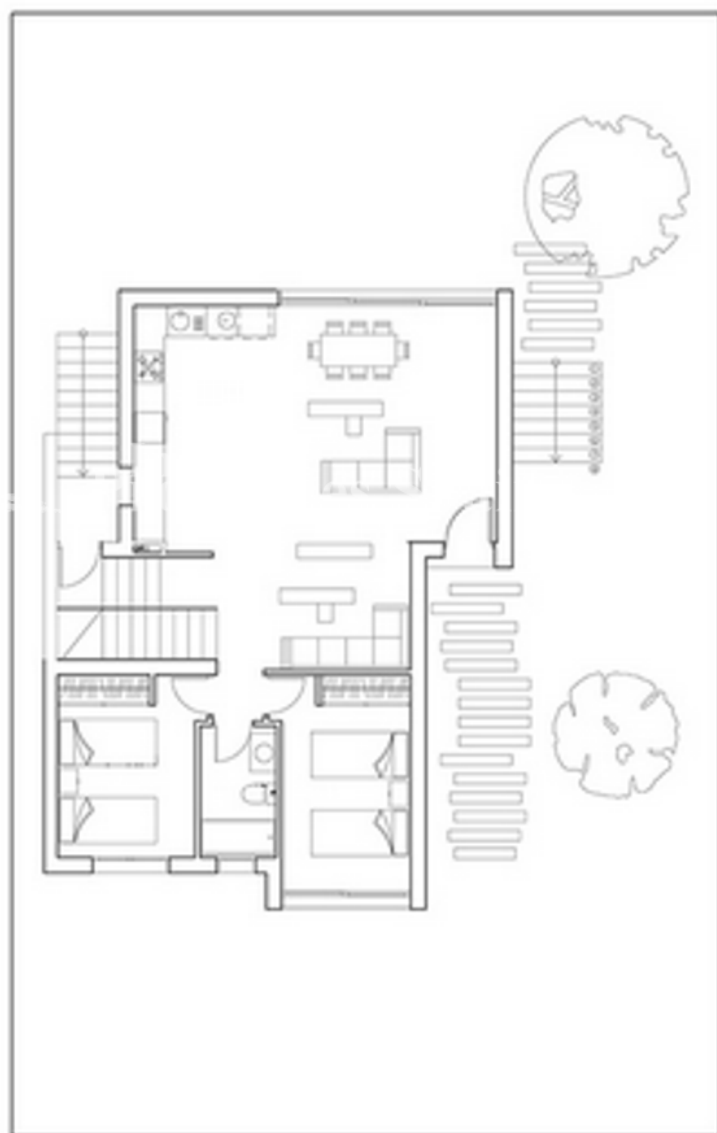
Comedor	30,59 m <sup>2</sup>
Cocina	13,11 m <sup>2</sup>
Dormitorio 1	10,95 m <sup>2</sup>
Dormitorio 2	9,88 m <sup>2</sup>
Baño 1	3,87 m <sup>2</sup>
Pasillo	1,20 m <sup>2</sup>

## PLANTA PRIMERA

Dormitorio 3	10,95 m <sup>2</sup>
Baño 2	3,20 m <sup>2</sup>
Estar	14,09 m <sup>2</sup>
Escalera	4,36 m <sup>2</sup>
Terraza	31,62 m <sup>2</sup>

SUPERFICIE ÚTIL: 127,91 m<sup>2</sup>

SUPERFICIE CONSTRUIDA: 128,34 m<sup>2</sup>



## PLANTA BAJA





***"OUR EXPERIENCE IS YOUR GUARANTEE"***