



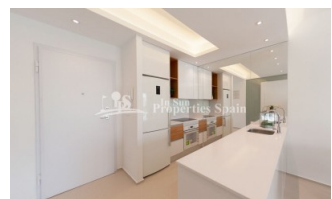
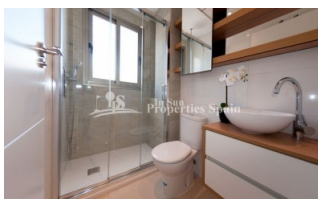
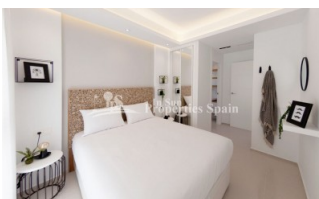
REF: # 5925

QUESADA-ROJALES (DONA PEPA)



#### INFO

PRIS:	222.000 €
BOLIG TYPE:	Leilighet
STED:	Quesada-Rojales (Dona Pepa)
SOVEROM:	3
Bad:	2
BOAREAL ( m2 ):	96
TOMT ( m2 ):	-
Terrasse ( m2 ):	129
ÅR:	
ETASJER:	-
MELDING	-



#### BESKRIVELSE

Delivery September 2019. A STUNNING new development in DONA PEPA of 2 and 3 bedroom, 2 bathroom Ground and Top Floor Apartments. Ground floor of minimum 96m2 come with private 129m2 garden, from €222,000 and First Floor of minimum 96m2 come with private 75m2 roof solarium, from €248,000. These Apartments are from a well renowned builder with over 40 years experience, offering their same signature in terms of design, quality and finish. A home you will be proud to own! Doña Pepa is an elegant urbanization with wide avenues, wonderful views to the Natural Park and the salt lakes with a wide range of leisure activities and all the necessary amenities without having to take a car. It is only 30 minutes away from international airports, 35 minutes from Alicante and 5 minutes from the most beautiful beaches of the

Costa Blanca.It is an area with good annual temperatures and a great atmosphere. The area of Doña Pepa has a widely varied infrastructure offering a multitude of shops, supermarkets, restaurants, cafes, medical centers, pharmacies, golf courses, banks, a 4\* Hotel with a Spa, a church, a social center, a cultural center, sports areas, an aquapark, a school, two natural parks, a religious center and high quality shopping complexes.



<b>STIL</b> <ul style="list-style-type: none"><li>• Modern</li><li>• Contemporary</li></ul>	<b>UTSIKT</b> <ul style="list-style-type: none"><li>• Panorama</li></ul>	<b>AIRCONDITION</b> <ul style="list-style-type: none"><li>• Sentral aircondition</li></ul>	<b>DISTANSE TIL :</b> <div>Strand : +10 Km</div> <div>Flyplass: 30 Km</div> <div>Sentrum : 1 Km</div>
<b>ORIENTERING</b> <div>South East West</div>	<b>PARKERING NR BILER</b> <div>: 1</div>	<b>HOVED BOLIG</b> <ul style="list-style-type: none"><li>• Bad on suite</li></ul>	<b>FLOARING</b> <ul style="list-style-type: none"><li>• Fliser</li><li>• Stein</li></ul>
<b>KJØKKEN</b> <ul style="list-style-type: none"><li>• Åpent kjøkken</li><li>• Hvitevarer</li><li>• Granit benkeplate</li></ul>	<b>HAGE TERASSER</b> <ul style="list-style-type: none"><li>• Ooverbygd terrasse</li><li>• Åpen terrasse</li><li>• Opparbeidet hage</li><li>• Privat hage</li><li>• Felles hage</li></ul>	<b>EXTRA</b> <ul style="list-style-type: none"><li>• Innebygde garderober</li><li>• Sikkerhets dør</li><li>• Vinduer med dobbelt glass</li></ul>	























**"OUR EXPERIENCE IS YOUR GUARANTEE"**