



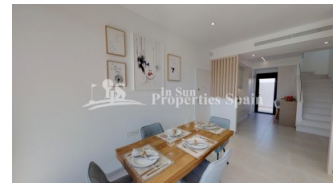
REF: # 6380

COSTA MURCIA (SAN PEDRO DEL PINATAR)



#### INFO

PRIS:	329.950 €
BOLIG TYPE:	Villa
STED:	Costa Murcia (San Pedro del Pinatar)
SOVEROM:	3
Bad:	3
BOAREAL ( m2 ):	128
TOMT ( m2 ):	190
Terrasse ( m2 ):	52
ÅR:	
ETASJER:	-
MELDING	-



#### BESKRIVELSE

New release of the popular premium Villas in SAN PEDRO DEL PINATAR, 600m/8 minutes walk from the beach. These 3 bedroom, 3 bathroom homes of 128m2 build are on minimum 190m2 plots and set in a nice residential area. Each with their own private pool, 52m2 garden and garage. Just 700m from the beaches. These off plan villas will have 2 levels and comprise of a large spacious open plan lounge with dining area and separate kitchen which comes fitted with modern design wall and base units equipped with Hob, oven and extractor fan. The 3 double bedrooms all come with fitted wardrobes and both first floor models have private bathrooms, there is also a family bathroom and utility room on the ground floor. Outside the property a generous garden with drive leading to a garage plus large patio areas offering lots of 'alfresco dining' options for an outdoor kitchen (next to the pool area), a private pool. The properties also come with installed air-con, kitchen appliances and pool cascade. Optional solarium (+15,500€) This 'exclusive' development of private homes are situated in a residential area – close to all amenities(8min walk), park areas, the beach (8min walk), bars, shops

and restaurants. The Mar Menor and all the facilities it has to offer is just a short 10 minute walk away, there are many golf courses nearby. This 'exclusive' development of private homes are situated in a residential area – close to all amenities, walking distance to park areas, the beach, bars, shops and restaurants.



<b>STIL</b> <ul style="list-style-type: none"><li>• Modern</li><li>• Contemporary</li></ul>	<b>UTSIKT</b> <ul style="list-style-type: none"><li>• Panorama</li></ul>	<b>DISTANSE TIL :</b> <div>Strand : 500 m</div> <div>Flyplass: 20 Km</div> <div>Sentrum : 1 Km</div>	<b>ORIENTERING</b> <div>South East West</div>
<b>MØBLER</b> <ul style="list-style-type: none"><li>• Uten møbler</li></ul>	<b>PARKERING NR BILER</b> <div>Garasje nr biler : 1</div>	<b>FLOARING</b> <ul style="list-style-type: none"><li>• Fliser</li><li>• Stein</li></ul>	<b>KJØKKEN</b> <ul style="list-style-type: none"><li>• Åpent kjøkken</li><li>• Hvitevarer</li></ul>
<b>HAGE TERASSER</b> <ul style="list-style-type: none"><li>• Ooverbygd terrasse</li><li>• Åpen terrasse</li><li>• Privat hage</li></ul>	<b>EXTRA</b> <ul style="list-style-type: none"><li>• Innebygde garderober</li><li>• Sikkerhets dør</li><li>• Vinduer med dobbelt glass</li></ul>		

































***"OUR EXPERIENCE IS YOUR GUARANTEE"***