



REF: # 8897

ORIHUELA COSTA (VILLAMARTIN-PAU26)



INFO

PRIS:	169.000 €
BOLIG TYPE:	Leilighet
STED:	Orihuela Costa (Villamartin- Pau26)
SOVEROM:	2
Bad:	2
BOAREAL (m2):	75
TOMT (m2):	-
Terrasse (m2):	60
ÅR:	
ETASJER:	-
MELDING	-



BESKRIVELSE

NEW- Modern, Residential complex with south orientation in PAU-26 VILLAMARTIN. The project comprises 24 apartments of 2/3 bedroom, 2 bathroom, ground floor with 60m2 private garden and top floor with 18 m2 terrace and 75m2 private roof terrace and stunning views and are lovely communal areas with large garden areas and spacious swimming pool, as well as underground parking space with storage room. 2 bed, 2 bath from €169.000 ground floor and 2 bed, 2 bath with roof terrace from € 189.000 and 3 bed, 2 bath from €225.000 . Beautiful modern design, ideal for holiday home or the perfect property in the sun all year round. Close to all amenities, with regular bus routes to neighboring areas including the La Zenia Boulevard shopping centre, Villamartin Plaza . Torrevieja Hospital is a 10 min drive away ,15 minutes drive to the beaches of Orihuela Costa and four 18hole golf courses, 40 minutes to Alicante or Murcia Airport. Handover follows: 15 month's after full building license!

ENERGETIC CERTIFIED



STIL <ul style="list-style-type: none">• Modern• Contemporary	UTSIKT <ul style="list-style-type: none">• Panorama	AIRCONDITION <ul style="list-style-type: none">• Sentral aircondition	DISTANSE TIL : <div>Strand : 4 Km</div> <div>Flyplass: 40 Km</div> <div>Sentrum : 2 Km</div>
ORIENTERING <div>South west</div>	MØBLER <ul style="list-style-type: none">• Uten møbler	PARKERING NR BILER <div>: 1</div>	HOVED BOLIG <ul style="list-style-type: none">• Lagerrom
FLOARING <ul style="list-style-type: none">• Fliser	KJØKKEN <ul style="list-style-type: none">• Åpent kjøkken• Hvitevarer• Granit benkeplate	HAGE TERASSER <ul style="list-style-type: none">• Ooverbygd terrasse• Åpen terrasse• Utebelysning• Inngjerdet• Stein murer• Privat hage• Felles hage	EXTRA <ul style="list-style-type: none">• Innebygde garderober• Sikkerhets dør• Vinduer med dobbelt glass• Lager rom







VIVIENDA 26-12



PLANTA BAJA

VIENDAS : 3 DORMITORIOS

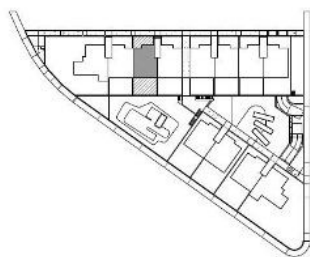
SUPERFICIE CONSTRUIDA

SUPERFICIE CERRADA	87,69 m2
PORCHE	17,50 m2
TERRAZA DESCUBIERTA	250,21 m2
TOTAL TERRAZA	267,71 m2
TOTAL SUPERFICIE	355,40 m2

0 0,5 1 2 3
ESCALA GRÁFICA



VIVIENDA 26-3

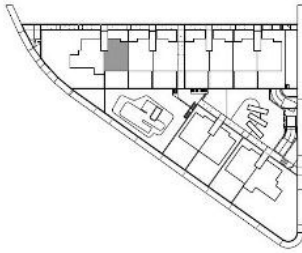


PLANTA BAJA
VIENDAS : 2 DORMITORIOS
SUPERFICIE CONSTRUIDA

SUPERFICIE CERRADA	75,22 m2
PORCHE	18,00 m2
TERRAZA DESCUB. DELANTERA	21,75 m2
TERRAZA DESCUB. TRASERA	20,25 m2
TOTAL TERRAZA	60,00 m2
TOTAL SUPERFICIE	135,22 m2



VIVIENDA 26-14



PLANTA PRIMERA
VIENDAS : 2 DORMITORIOS
SUPERFICIE CONSTRUIDA

SUPERFICIE CERRADA	75,22 m2
TERRAZA PLANTA VIV	18,00 m2
SOLARIUM	75,40 m2
TOTAL TERRAZA	93,40 m2
TOTAL SUPERFICIE	168,62 m2

0 0,5 1 2 3
ESCALA GRÁFICA





PLANTA BAJA

RESIDENCIAL EL AMANECER VII
- SUNRISE VII
PAU-26 - ORIHUELA COSTA









"OUR EXPERIENCE IS YOUR GUARANTEE"